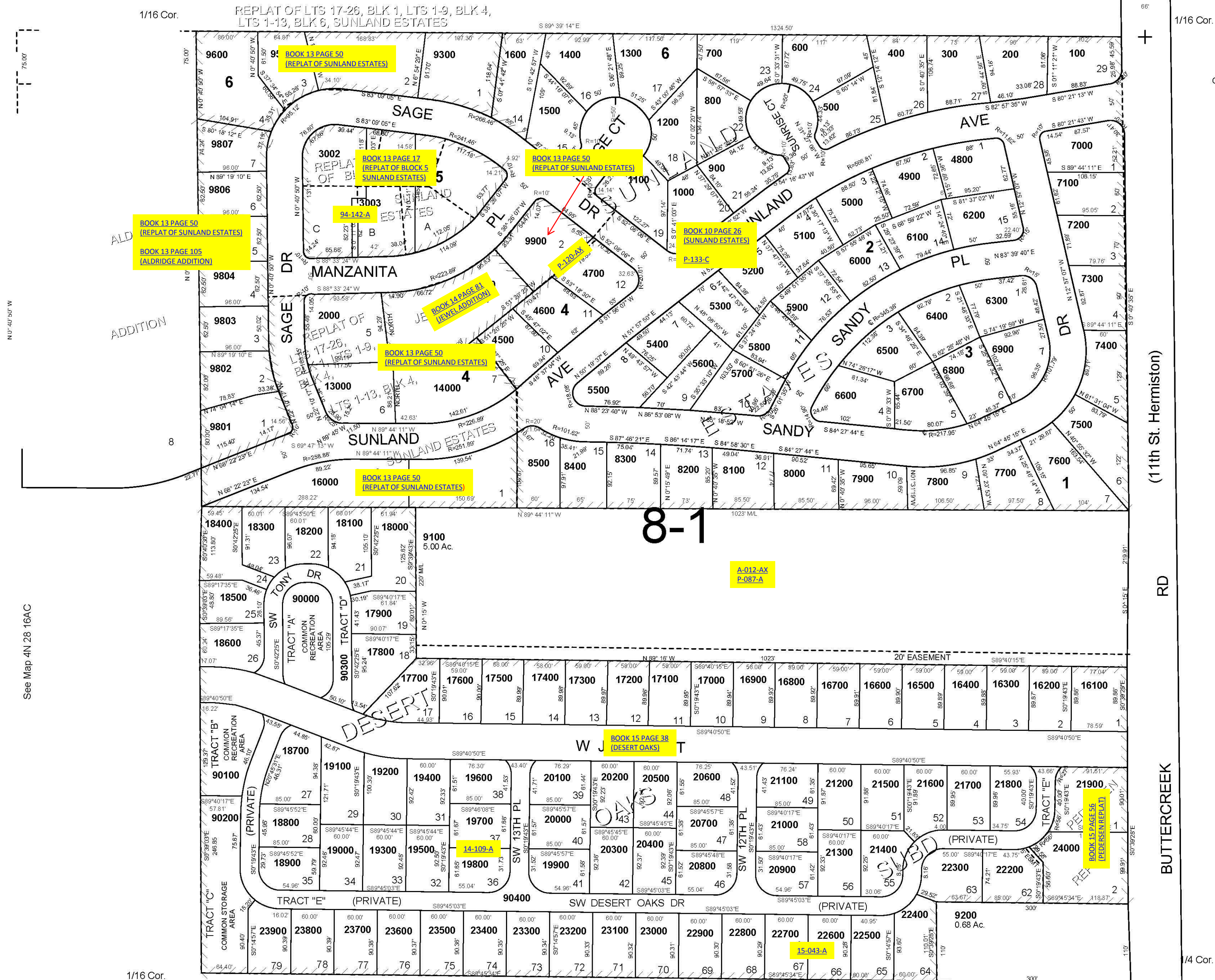


This map was prepared for Assessment & Taxation purposes only and was NOT prepared, nor is it suitable for legal, engineering or surveying purposes.

SE1/4 NE1/4 SEC 16 T4NR28E WM  
 UMATILLA COUNTY  
 SCALE 1"=100'

4N2816AD  
 AERIAL PHOTO NO NZ 2P-25

See Map 4N 28 16AA



- CANCELLED
- TL 3601
  - 3100
  - 3200
  - 3300
  - 3400
  - 3500
  - 1700
  - 1800
  - 1900
  - 2000
  - 2100
  - 2200
  - 2300
  - 2400
  - 2500
  - 2600
  - 2700
  - 2800
  - 2900
  - 3600
  - 3700
  - 3800
  - 3900
  - 4000
  - 4100
  - 4200
  - 4300
  - 4400
  - 8600
  - 8700
  - 8800
  - 8900
  - 9700
  - 9800
  - 11000
  - 22000
  - 22100

See Map 4N 28 15BC

REVISED: 3/16/11

4N2816AD

See Map 4N 28 16AC

See Map 4N 28 16D