

ALSO SEE SURVEYS 05-013-G, R-0020-C

This map was prepared for Assessment & Taxation purposes only and was NOT prepared nor is it suitable for legal, engineering or surveying purposes.

SW 1/4 NE 1/4 SEC 16 T4N R28E WM

UMATILLA COUNTY

SCALE 1" = 100'

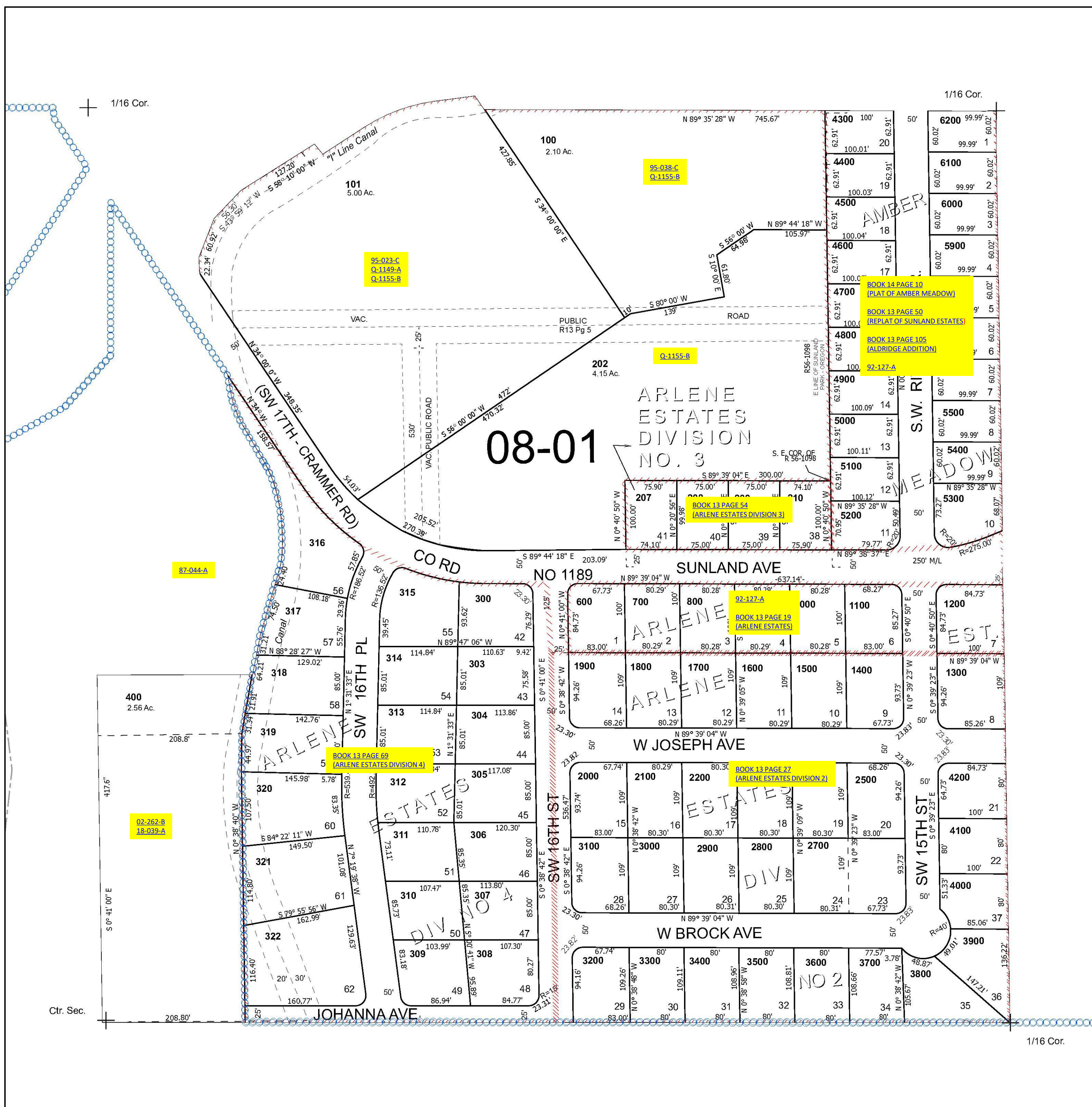
Hermiston

4N 28 16AC

Cancelled Tax Lots

- 102 206
- 103 301
- 104 302
- 105 500
- 106 501
- 200 502
- 201 2600
- 203
- 204
- 205

See Map 4N 28 16AB



See Map 4N 28 16

See Map 4N 28 16AD

Revised 12/4/2024

See Map 4N 28 16D

4N 28 16AC