

ALSO SEE SURVEY 05-013-G

This map was prepared for Assessment & Taxation purposes only and was NOT prepared nor is it suitable for legal, engineering or surveying purposes.

# NW 1/4 NE 1/4 SEC 16 T4N R28E WM

## UMATILLA COUNTY

SCALE 1" = 100'

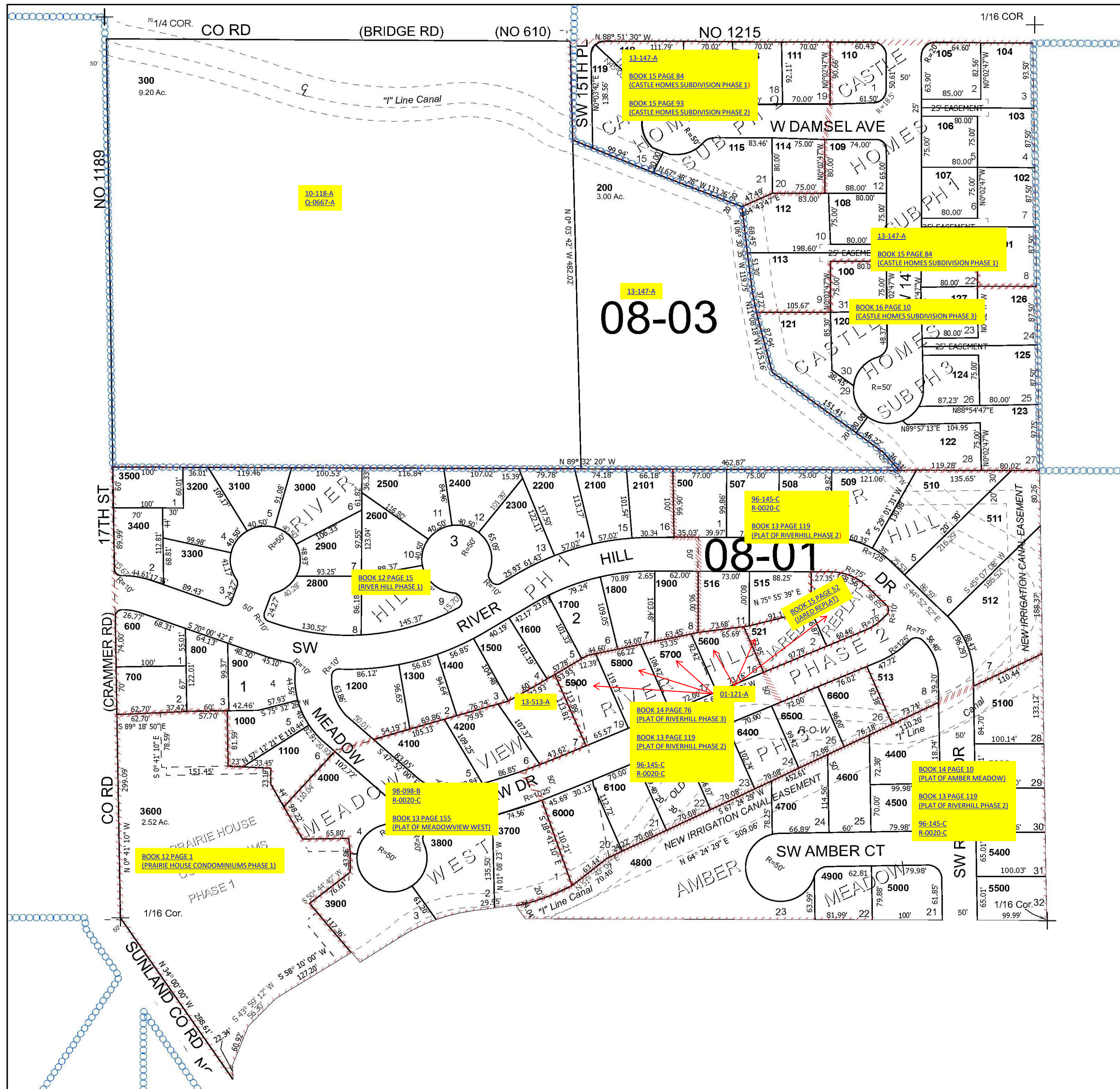
Hermiston

### 4N 28 16AB

Cancelled Tax Lots

400	90109	90210
401-402	90111	
403-405	90113	
501-506	90115-90126	
517-520	90128-90148	
2000	90150-90161	
90101	90202	
90103	90204	
90105	90206	
90107	90208	

See Map 4N 28 09DC



See Map 4N 28 168A

See Map 4N 28 16AA

Revised 11/27/2024

See Map 4N 28 16AC

### 4N 28 16AB