

ALSO SEE SURVEY 05-013-G

SHEET NO.1

SE 1/4 NE 1/4 SEC 14 T4N R28E WM

UMATILLA COUNTY

SCALE 1" = 100'

Hermiston

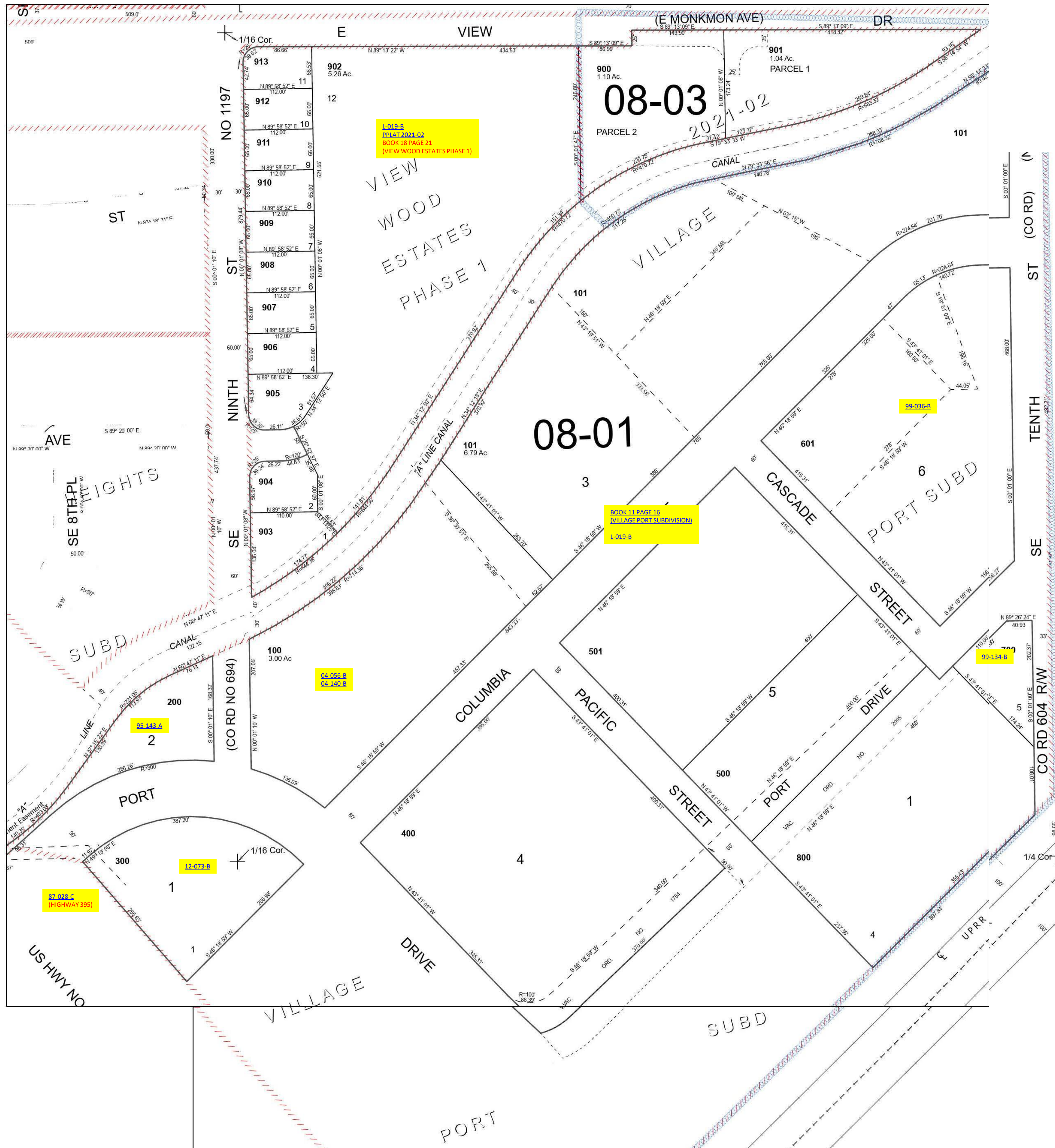
This map was prepared for Assessment & Taxation purposes only and was NOT prepared nor is it suitable for legal, engineering or surveying purposes.

Cancelled Tax Lots

- 102
- 201
- 202
- 600
- 602
- 1000

See Map 4N 28 14AA

SHEET NO.1 4N 28 14AD



See Map 4N 28 14AC