

ALSO SEE SURVEYS 05-013-G, 05-088-C, 91-032-B

This map was prepared for Assessment & Taxation purposes only and was NOT prepared nor is it suitable for legal, engineering or surveying purposes.  
Cancelled Tax Lots

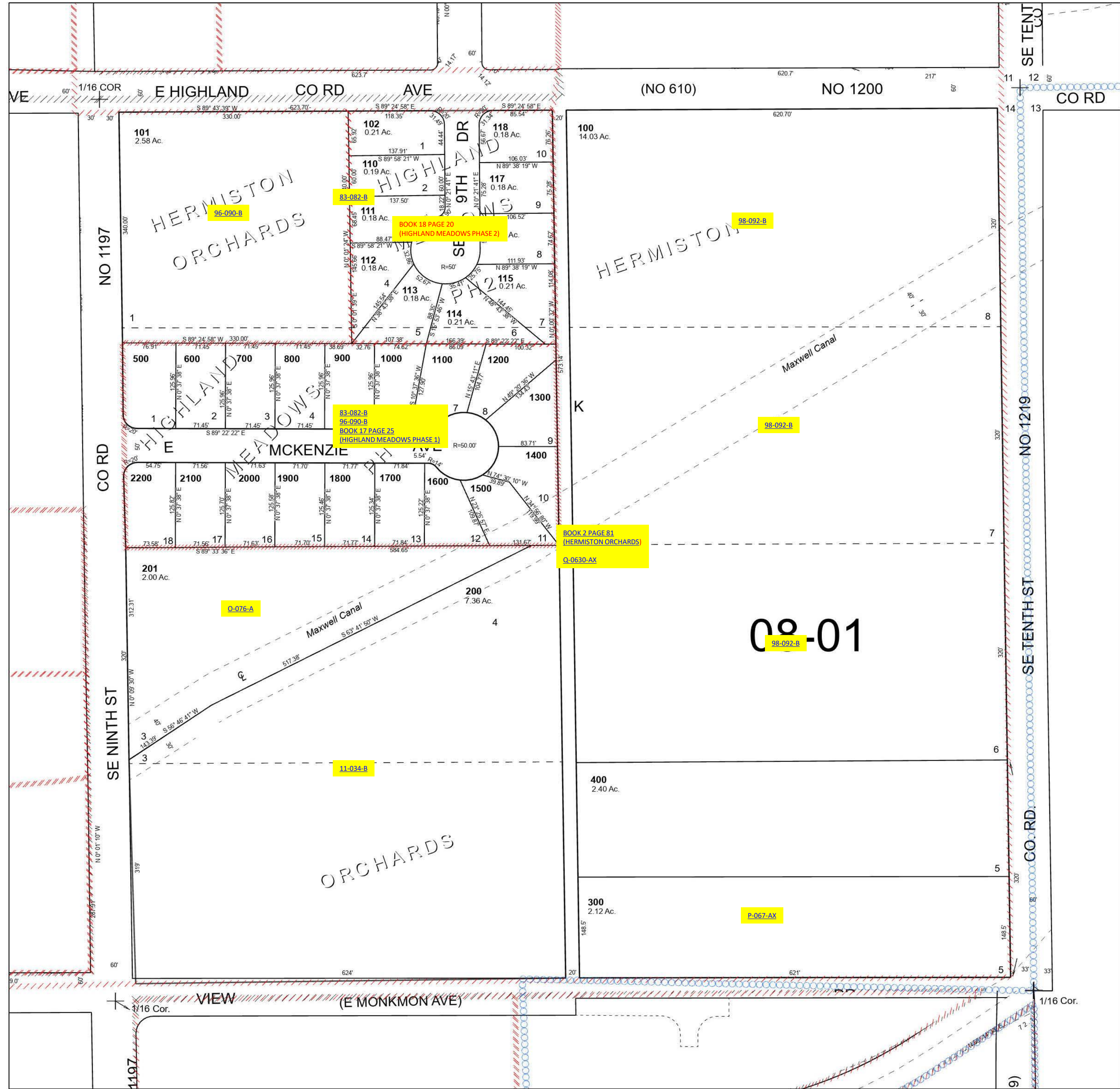
# NE 1/4 NE 1/4 SEC 14 T4N R28E WM UMATILLA COUNTY

SCALE 1" = 100'

Hermiston

4N 28 14AA

See Map 4N 28 11DD



See Map 4N 28 14AB

See Map 4N 28 13BB

Revised 11/6/2023

See Map 4N 28 14AD

4N 28 14AA