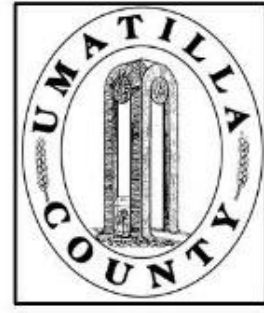


This map was prepared for Assessment & Taxation purposes only and was NOT prepared nor is it suitable for legal, engineering or surveying purposes.

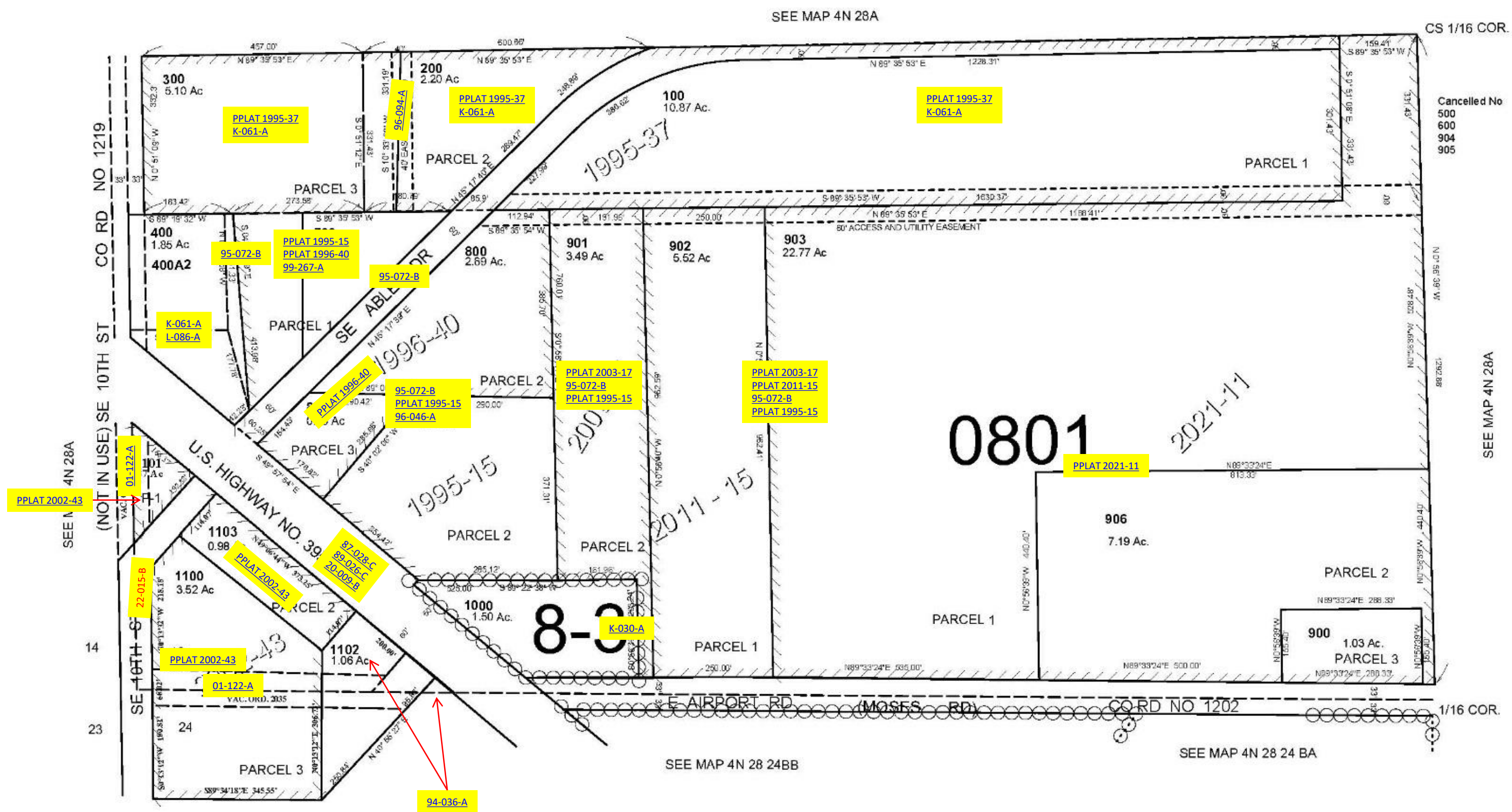


SW1/2 SW1/4 SEC 13 T4N R28E WM UMATILLA COUNTY

4N 28 13C

SCALE: 1" = 200'

AERIAL PHOTO NO 2P-21



Cancelled No
500
500
904
905

SEE MAP 4N 28A

1/16 COR.

SEE MAP 4N 28 24BB

SEE MAP 4N 28 24 BA

Revised: 05-10-2021

4N 28 13C