

ALSO SEE SURVEYS 05-013-G, Q-1355-AX

This map was prepared for Assessment & Taxation purposes only and is NOT prepared nor is it suitable for legal, engineering or surveying purposes.

Cancelled Tax Lots

- 1200
- 1301
- 1502
- 1700
- 2200
- 6100
- 8700
- 10701

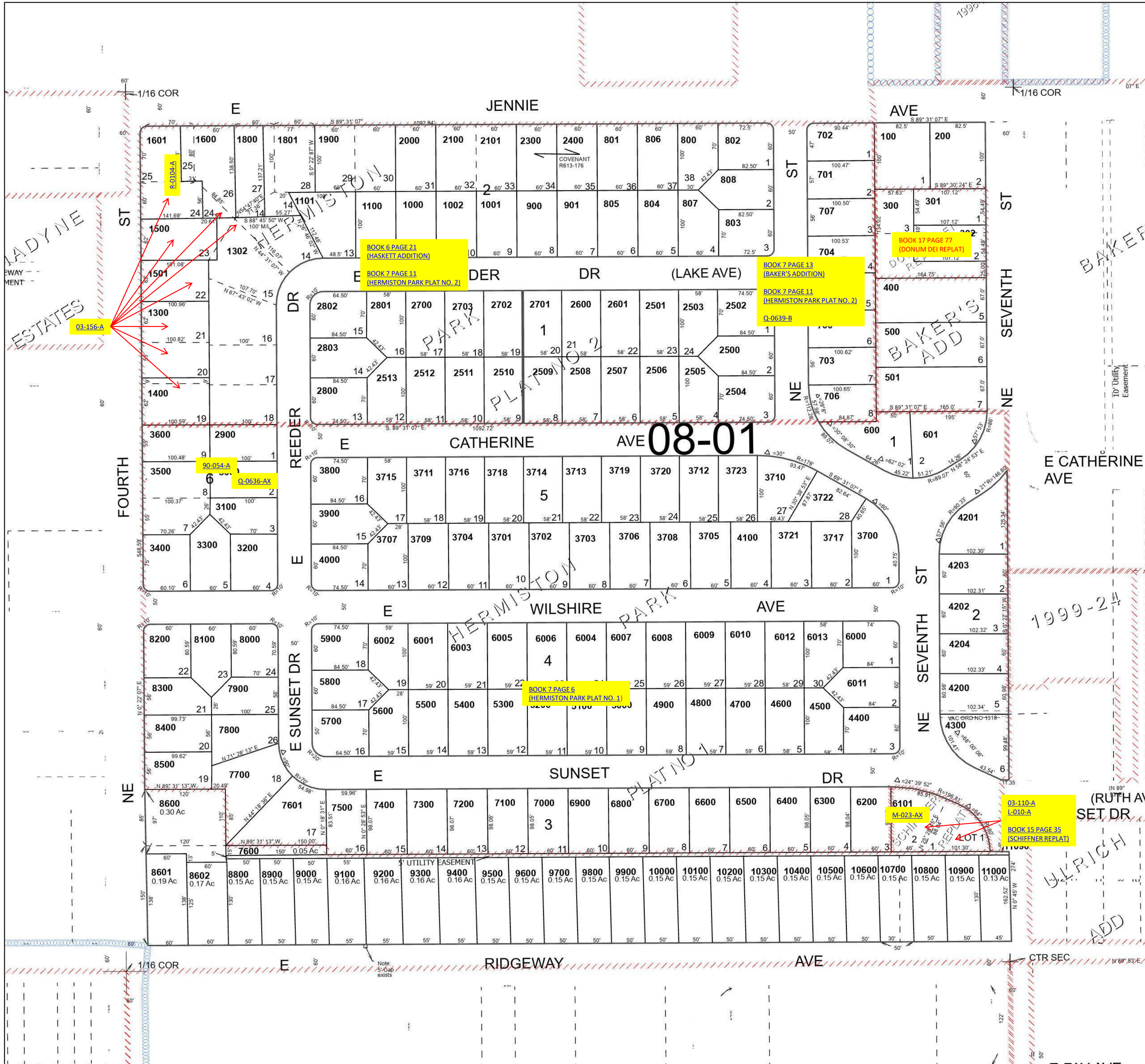
SE 1/4 NW 1/4 SEC 11 T4N R28E WM UMATILLA COUNTY

SCALE 1" = 100'

Hermiston

4N 28 11BD

See Map 4N 28 11BA



See Map 4N 28 11BC

See Map 4N 28 11AC

Revised 6/7/2023

See Map 4N 28 11CA

4N 28 11BD