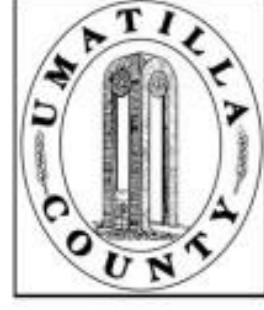


ALSO SEE SURVEY 05-013-G

This map was prepared for Assessment & Taxation purposes only and was NOT prepared nor is it suitable for legal, engineering or surveying purposes.

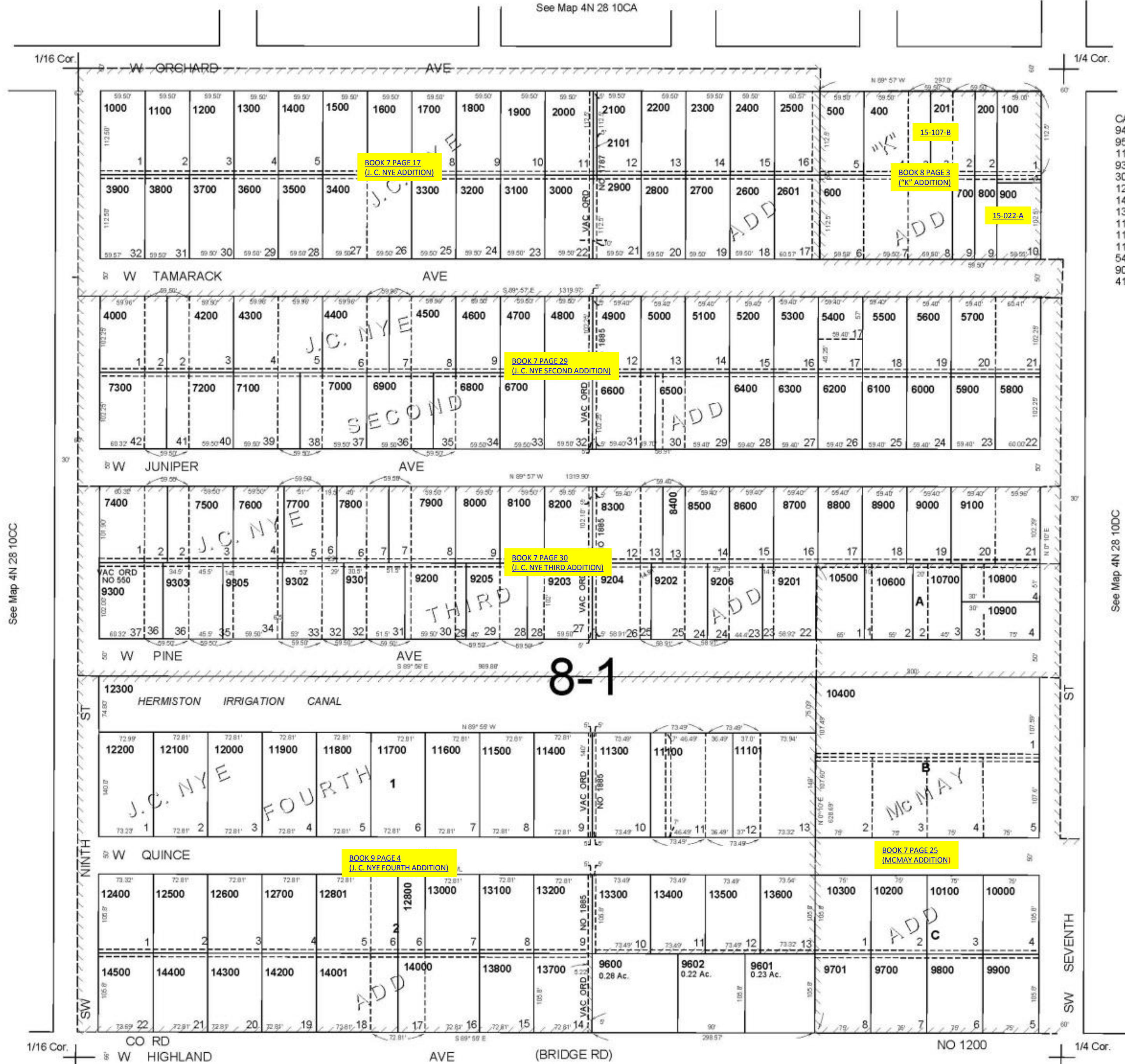


SE1/4 SW1/4 SEC 10 T4N R28E WM UMATILLA COUNTY

4N 28 10CD
Aerial Photo No. NZ-iP-121

SCALE: 1" = 100'

See Map 4N 28 10CA



- CANCELLED NOS
- 9400
 - 9500
 - 11000
 - 9304
 - 300
 - 12900
 - 14100
 - 13900
 - 11200
 - 11102
 - 11103
 - 5401
 - 901
 - 4100

See Map 4N 28 10DC

8/19/09

4N 28 10CD