

Cancelled Tax Lots

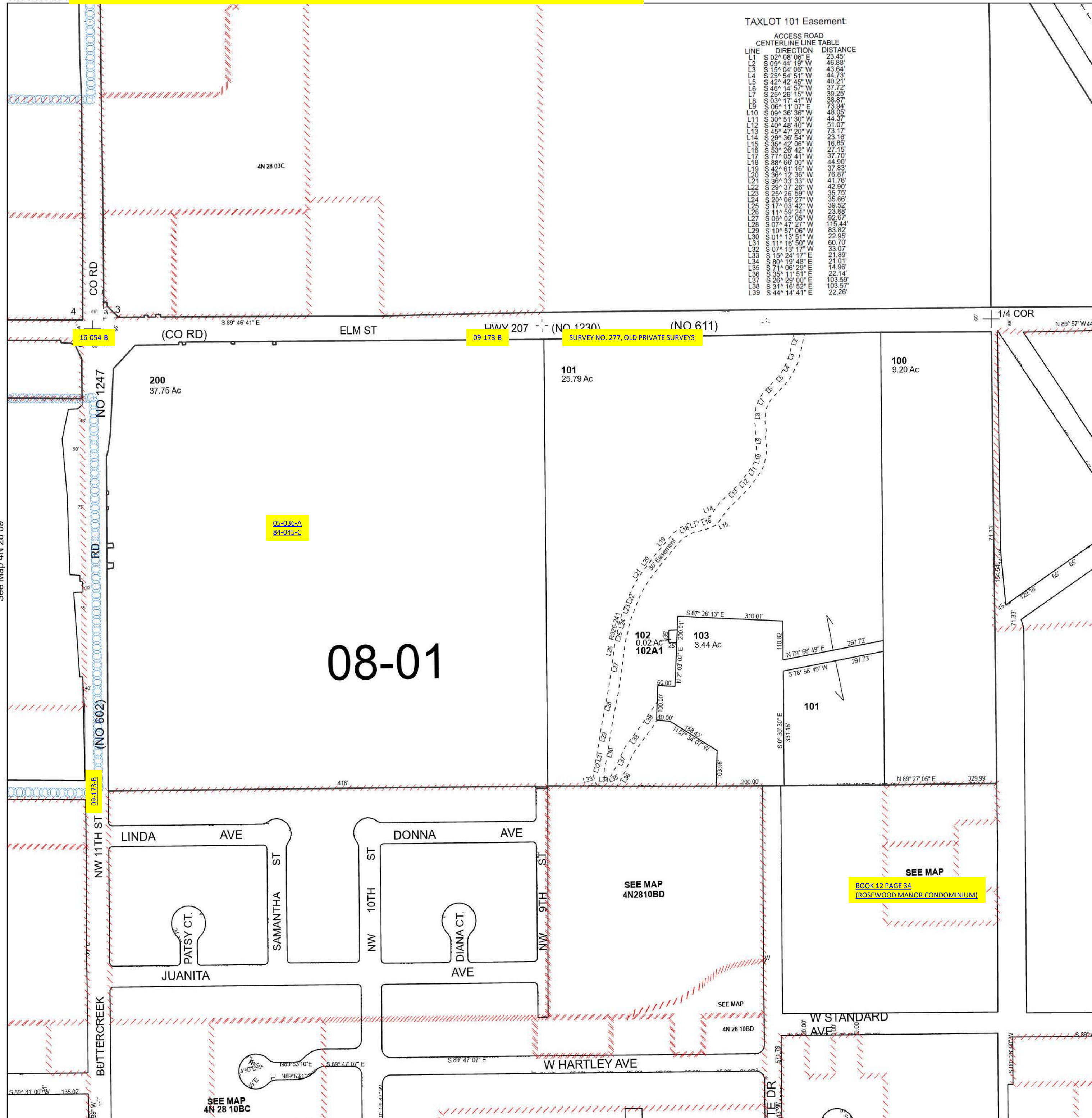
| | | | |
|-----------|-----------|-----------|-----------|
| 300 | 11239 | 1800 | 2600 |
| 400 | 1140-1148 | 1801 | 2700 |
| 500 | 1200 | 1900 | 2800 |
| 600 | 1201 | 1990 | 2900 |
| 601 | 1300-1310 | 2000 | 3000 |
| 700 | 1311-14 | 2100-2103 | 3100-3200 |
| 800 | 1500-1502 | 2200 | 3300 |
| 900 | 1600 | 2300 | 3400 |
| 1000 | 160 | | |
| 1100-1138 | 1700-1 | | |

NW 1/4 SEC 10 T4N R28E WM
UMATILLA COUNTY

4N 28 10B
Hermiston

SCALE 1" = 200'

ALSO SEE SURVEYS Q-0620-AX, Q-1360-AX, 07-074-C, 09-039-A, 14-066-AX, S-156-C; CORNER RECORDS; G.L.O. SURVEYS



Revised 12/29/2023

See Map 4N 28 10BD

4N 28 10B