

This map was prepared for Assessment & Taxation purposes only and was NOT prepared nor is it suitable for legal, engineering or surveying purposes.

Cancelled Tax Lots

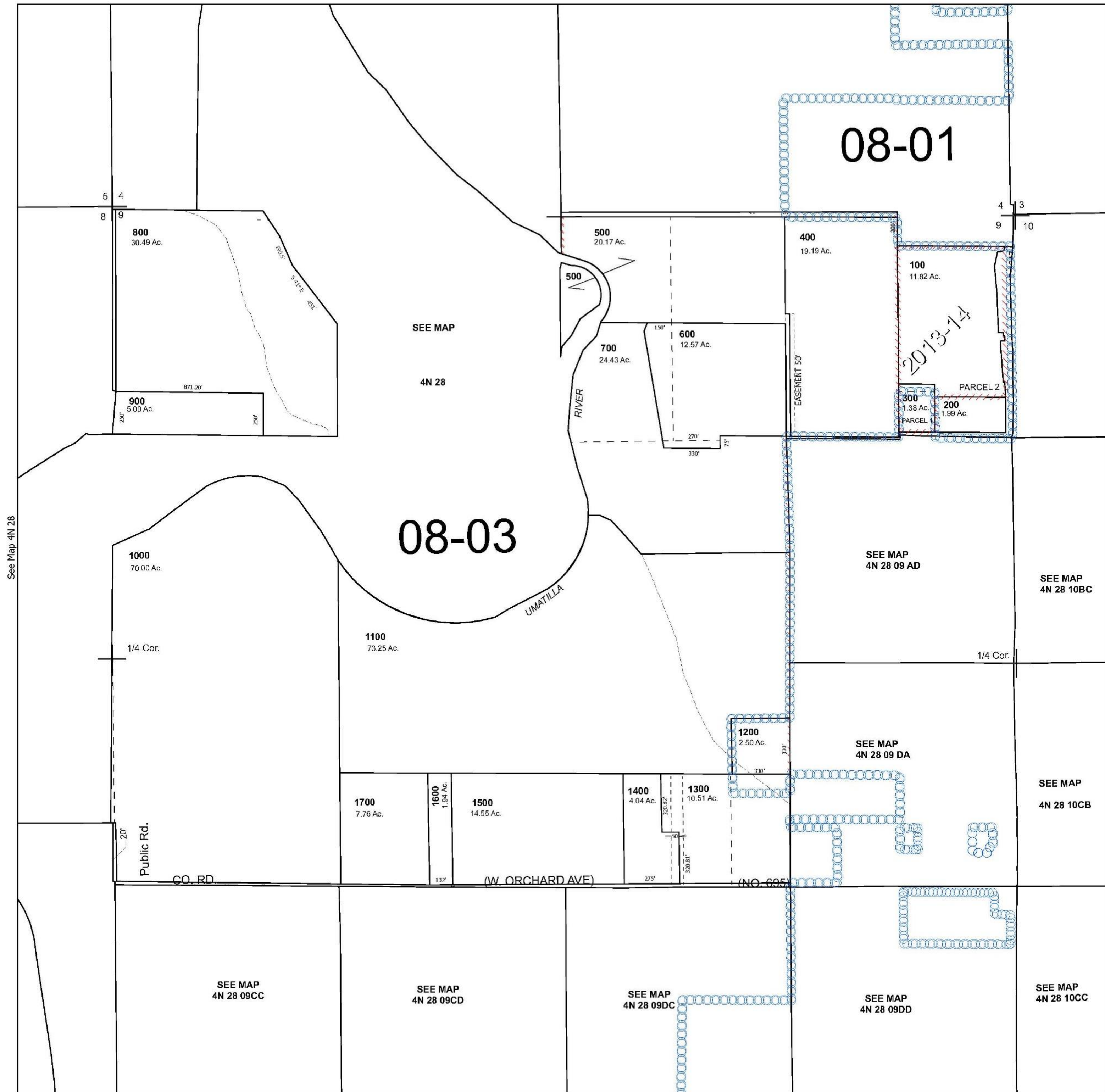
# SEC 09 T4N R28E WM UMATILLA COUNTY

SCALE 1" = 400'

## 4N 28 09

Hermiston

See Map 4N 28 04



See Map 4N 28

See Map 4N 28 09AD

Revised 1/13/2025

See Map 4N 28 09CD

## 4N 28 09