

ALSO SEE SURVEY 05-013-G

This map was prepared for Assessment & Taxation purposes only and was NOT prepared nor is it suitable for legal, engineering or surveying purposes.

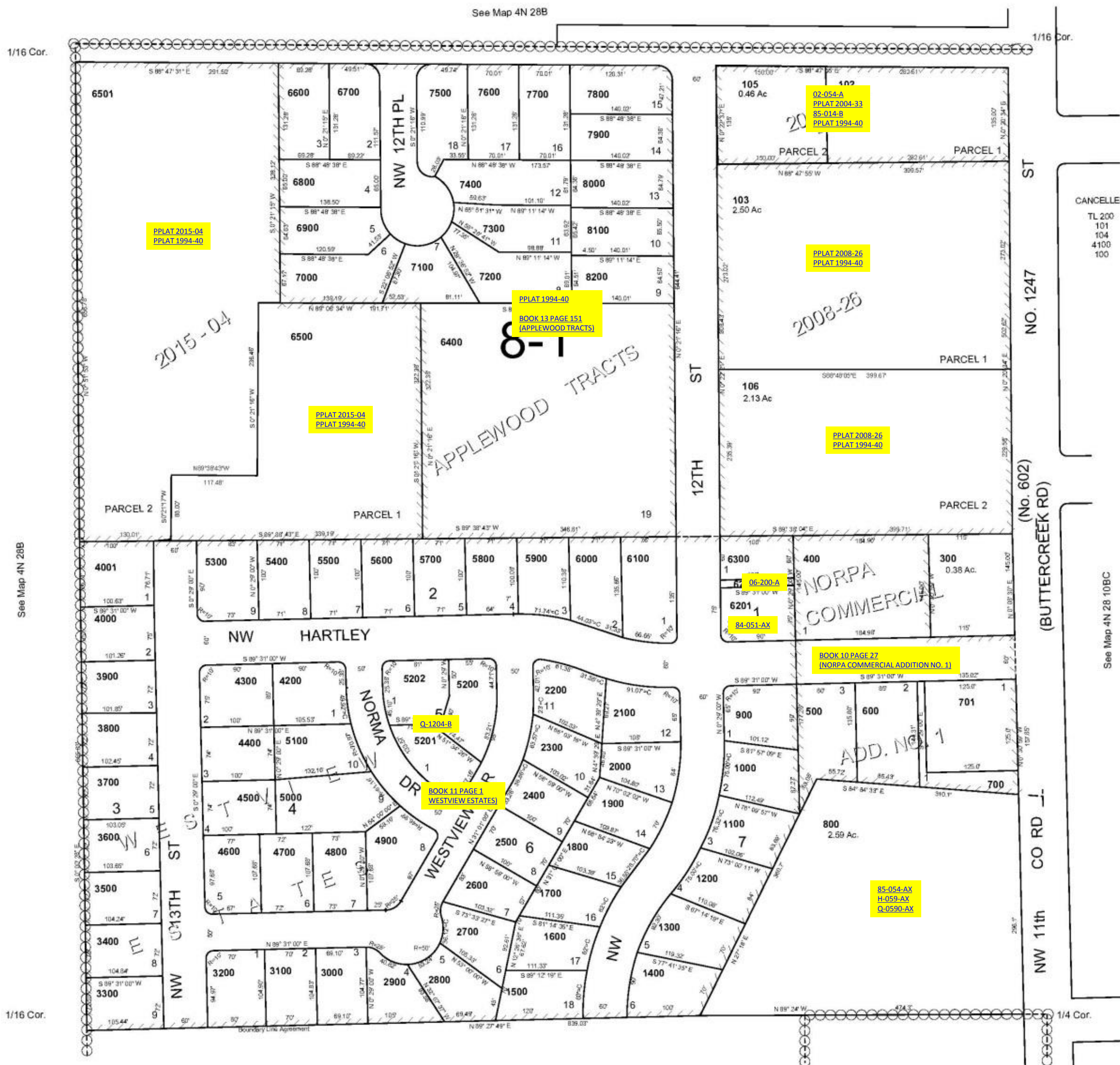


# SE 1/4 NE 1/4 SEC 9 T4N R28E WM UMATILLA COUNTY

## 4N 28 09AD

AERIAL PHOTO NO. NZ-1P-120

SCALE: 1" = 100



CANCELLED  
TL 200  
101  
104  
4100  
100

REVISED: 3/10/15

## 4N 28 09AD