

ALSO SEE SURVEYS I-154-C, S-156-C, 09-039-A; CORNER RECORDS; G.L.O. SURVEYS

This map was prepared for Assessment & Taxation purposes only and was NOT prepared nor is it suitable for legal, engineering or surveying purposes.

Cancelled Tax Lots

200
601
704

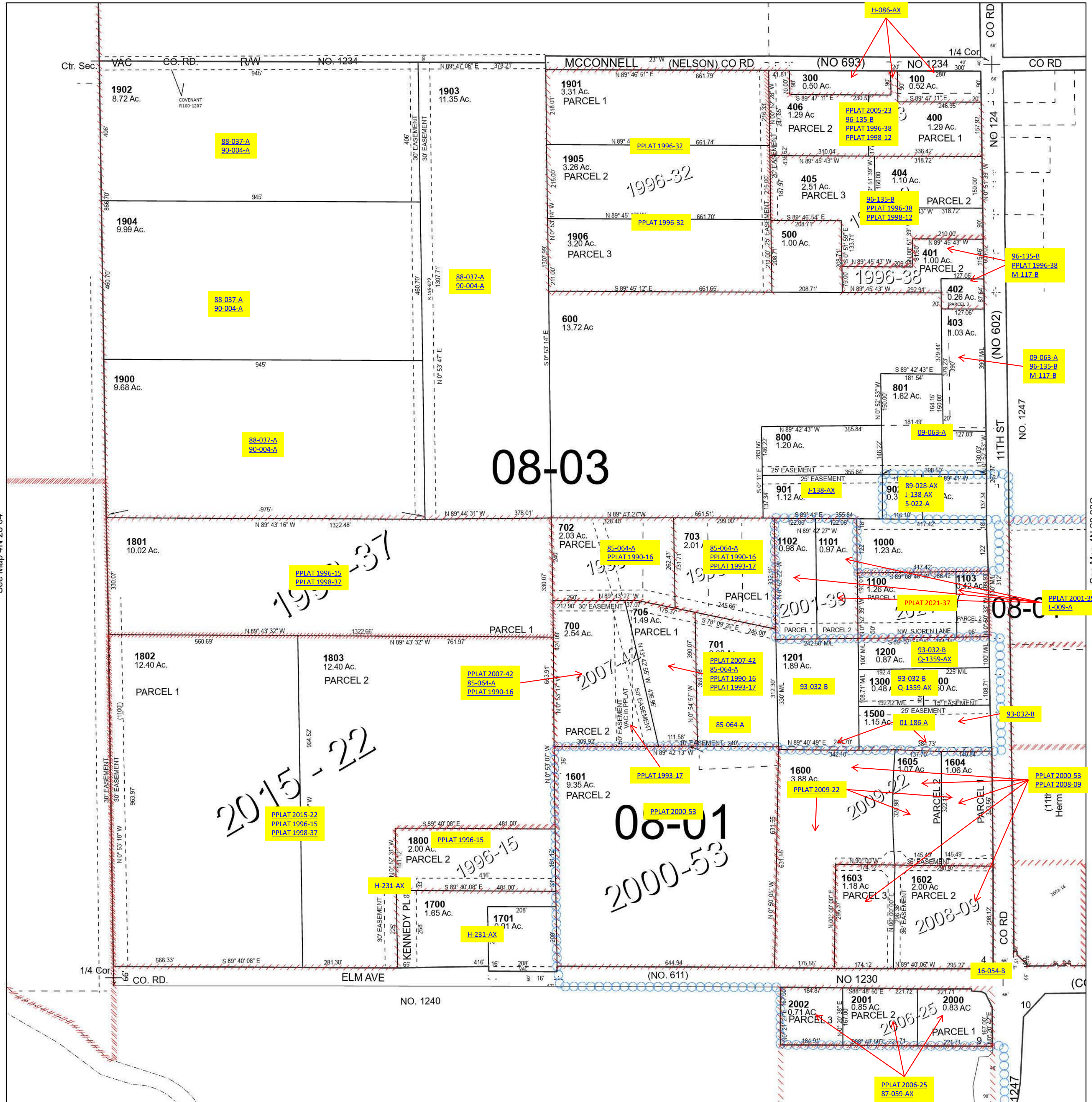
SE 1/4 SEC 04 T4N R28E WM UMATILLA COUNTY

4N 28 04D

Hermiston

SCALE 1" = 200'

See Map 4N 28 04A



Revised 8/31/2023

See Map 4N 28 09

4N 28 04D