

ALSO SEE SURVEY 05-013-G

This map was prepared for Assessment & Taxation purposes only and was NOT prepared nor is it suitable for legal, engineering or surveying purposes.

NW 1/4 SW 1/4 SEC 02 T4N R28E WM UMATILLA COUNTY SCALE 1" = 100'

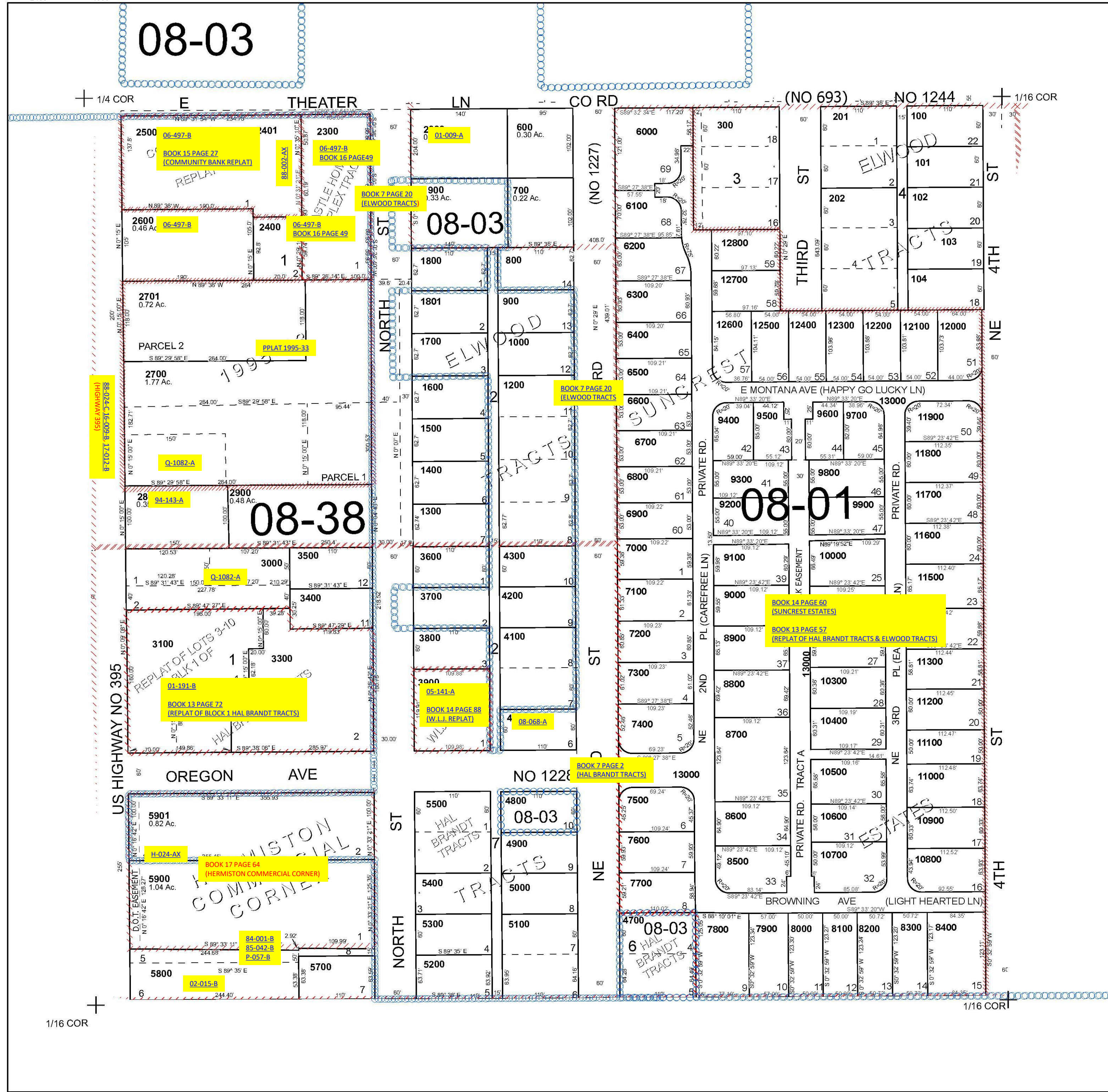
Hermiston

4N 28 02CB

Cancelled Tax Lots

200	2400A1	4701
301	2401	5600
400	2702	12900
500	2801	
590	3101	
1100	3200	
2100	3201	
2101	4400	
2200	4500	
2400	4600	

See Map 4N 28 02B



See Map 4N 28 03D

See Map 4N 28 02C

Revised 8/26/2024

See Map 4N 28 02C

4N 28 02CB