

ALSO SEE SURVEYS 07-074-C, Q-1332-A, S-156-C; CORNER RECORDS; G.L.O. SURVEYS

This map was prepared for Assessment & Taxation purposes only and was NOT prepared nor is it suitable for legal, engineering or surveying purposes.

NE 1/4 SEC 02 T4N R28E WM UMATILLA COUNTY

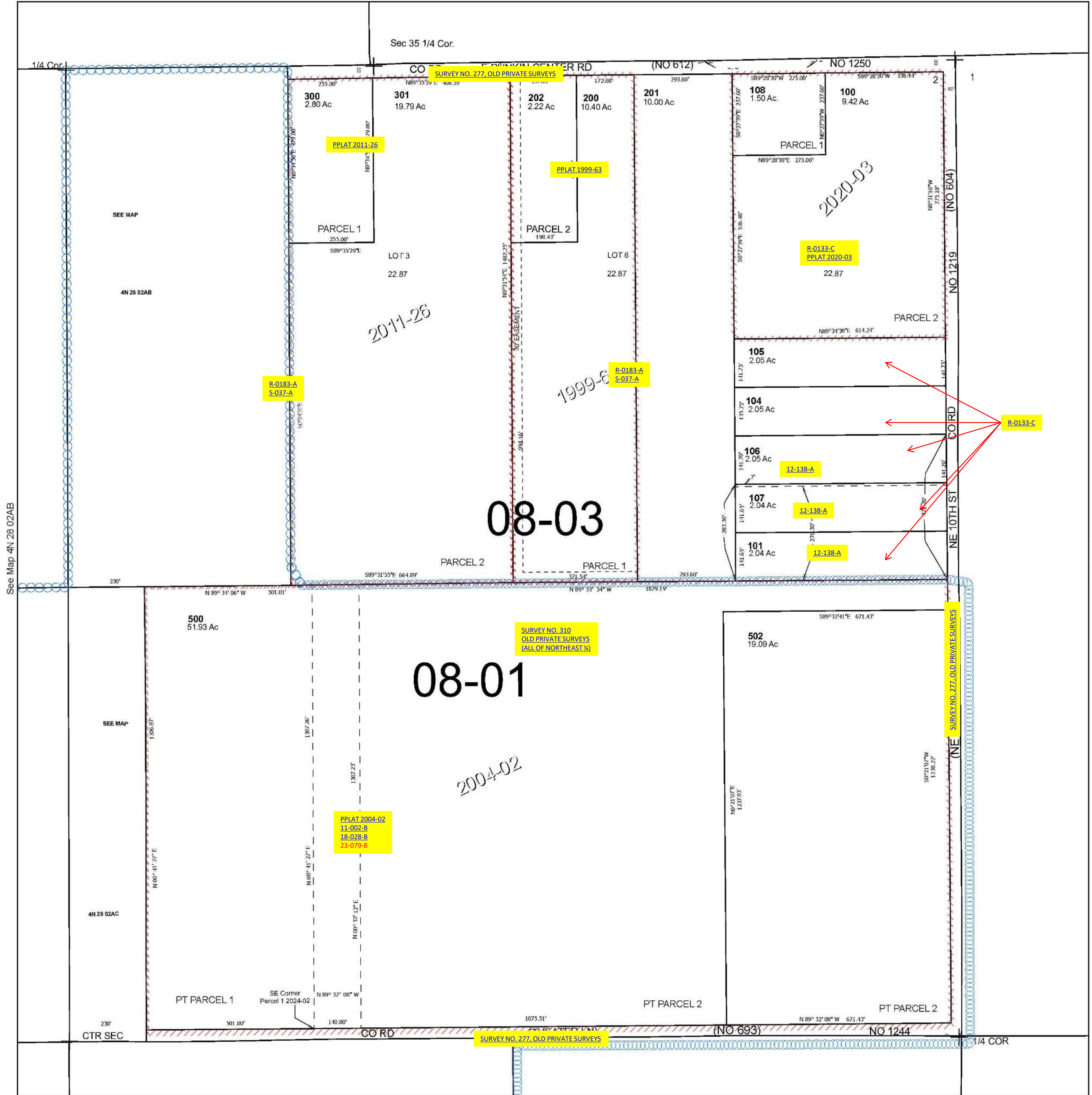
SCALE 1" = 200'

4N 28 02A

Hermiston

Cancelled Tax Lots
102
103
400
501

See Map 5N 28 35D



Revised 11/13/2024

See Map 4N 28 02D

4N 28 02A