

This map was prepared for Assessment & Taxation purposes only and was NOT prepared nor is it suitable for legal, engineering or surveying purposes.

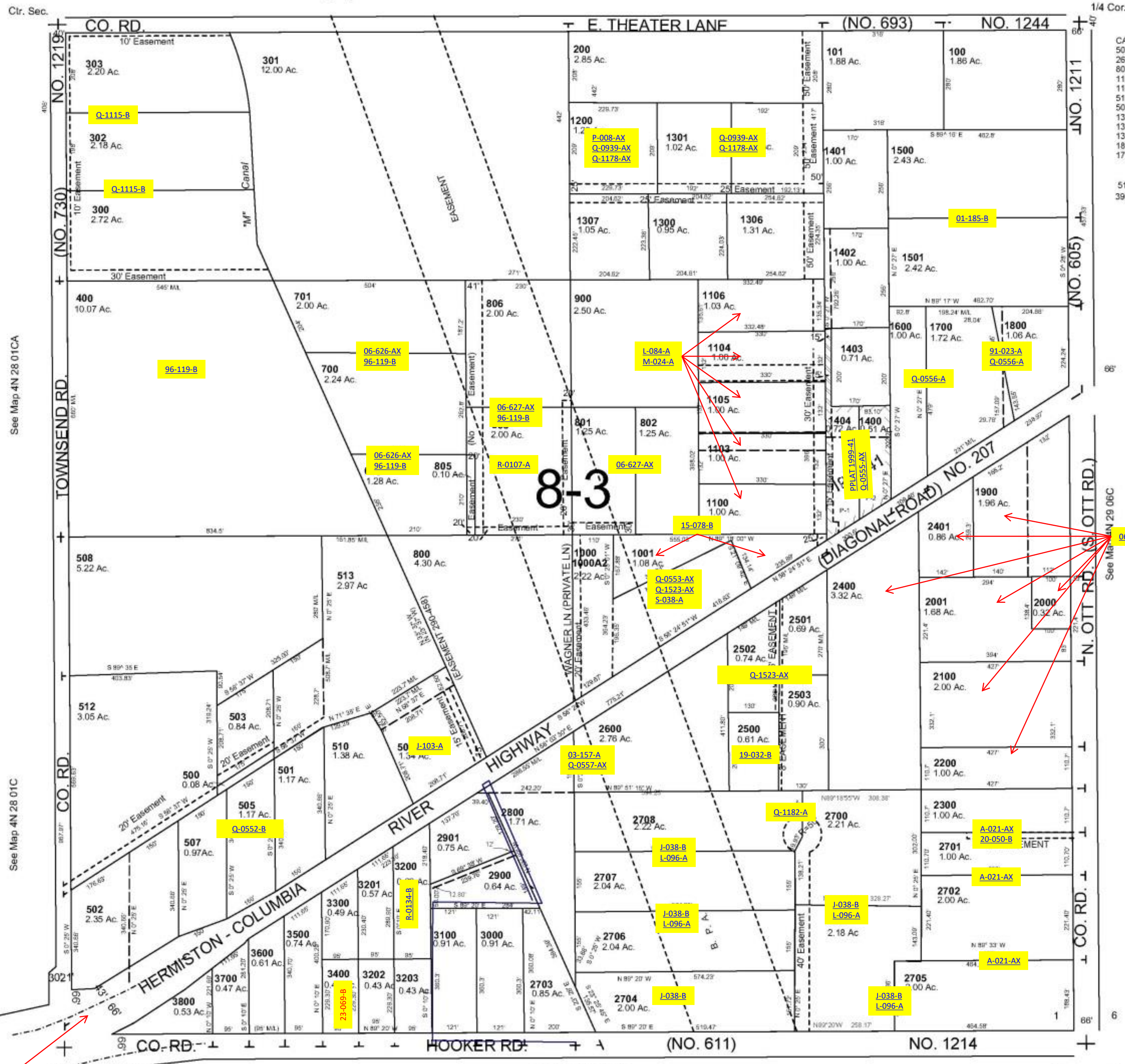
SE1/4 SEC 1 T4N R28E WM UMATILLA COUNTY

1"=200'

4N 28 01D

AERIAL PHOTO NO. NZ 1P-123

See Map 4N 28 01A



- CANCELLED NOS
- 509
 - 2601
 - 804
 - 1101
 - 1102
 - 511
 - 504
 - 1304
 - 1305
 - 1303
 - 1801
 - 1701
 - 514
 - 3900

09-173-B
96-034-C
(HIGHWAY 207)

Revised: 11-7-14

4N 28 01D