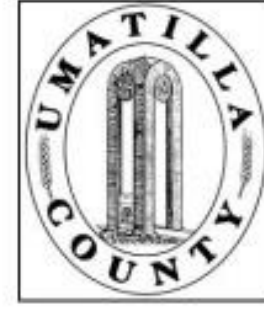


This map was prepared for Assessment & Taxation purposes only and was NOT prepared nor is it suitable for legal, engineering or surveying purposes.



NE1/4 SEC 1 T 4N R 28E WM UMATILLA COUNTY

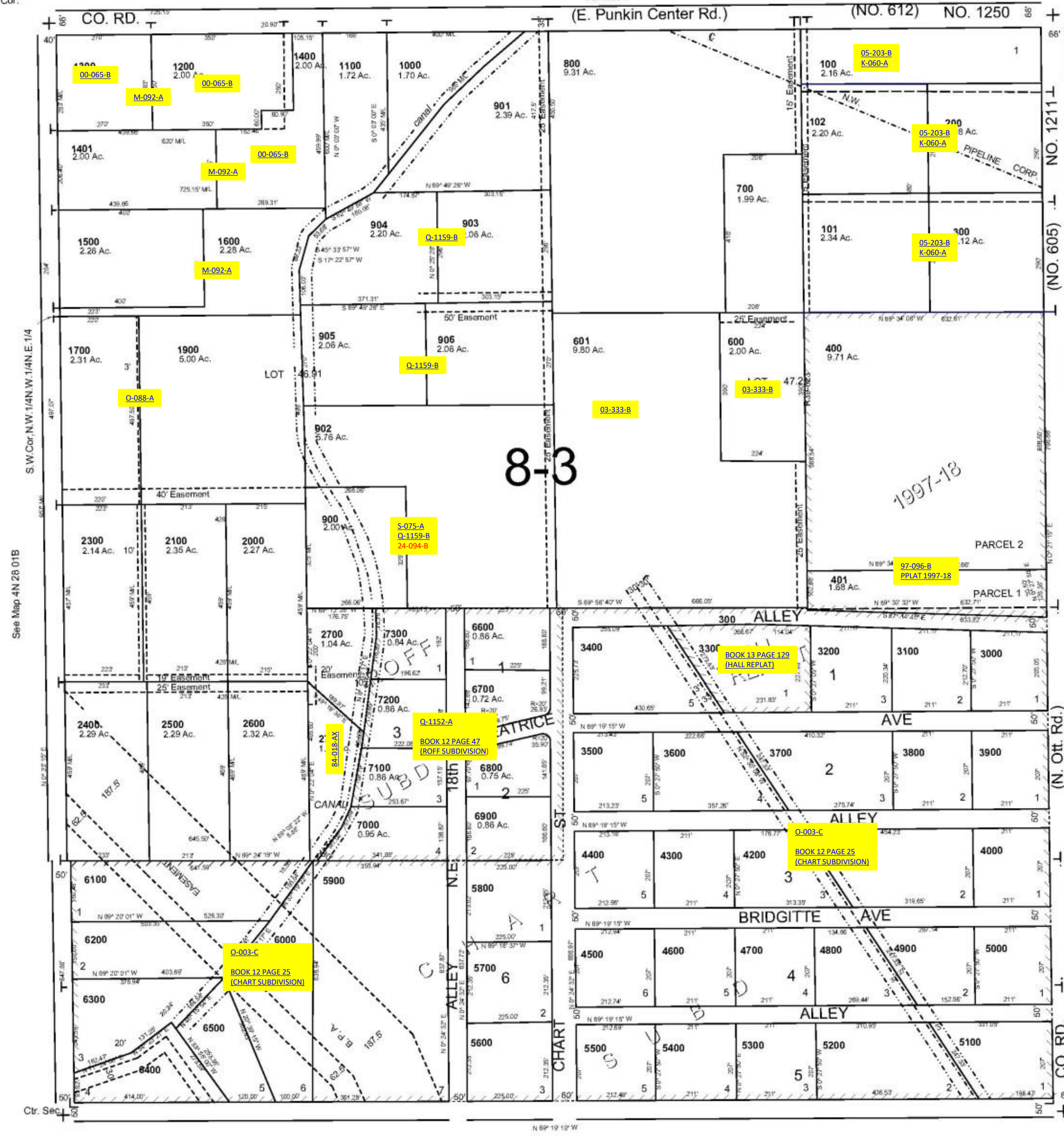
SCALE: 1" = 200'

4N 28 01A

AERIAL PHOTO NO. NZ-1P-124

1/4 Cor.

See Map 5N 28 36D



- Cancelled Nos
- 2200
- 501
- 500
- 2800
- 2900
- 2702
- 2701
- 1800

See Map 4N 28 06B

Revised: 06-16-14

1/4 Cor.

4N2801A