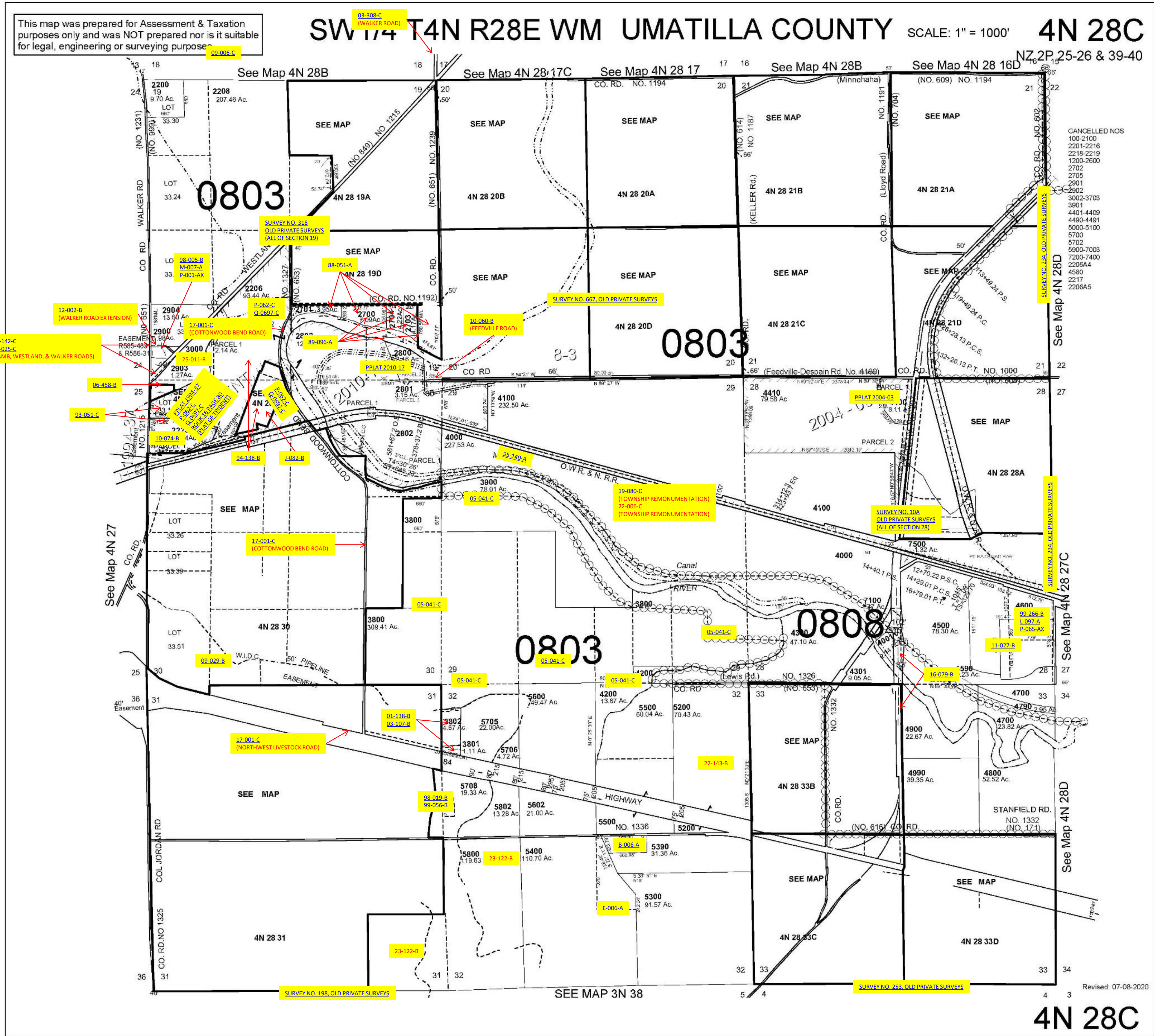


ALSO SEE SURVEYS 13-015-C, 88-015-C, 91-031-B, 91-040-C, 02-160-B, 03-054-C, 07-074-C, 09-039-A, 09-173-B, 11-135-A, 13-517-B, 92-045-C, C-020-B, H-107-B, M-079-C, S-066-B, S-156-C, 94-171-G, F-007-C, H-026-AX; CORNER RECORDS; G.L.O. SURVEYS, SURVEYS NO. 175, 281-OLD PRIVATE SURVEYS

This map was prepared for Assessment & Taxation purposes only and was NOT prepared nor is it suitable for legal, engineering or surveying purposes

SW 1/4 T4N R28E WM UMATILLA COUNTY SCALE: 1" = 1000' 4N 28C



CANCELLED NOS
 100-2100
 2201-2216
 2218-2219
 1200-2600
 2702
 2705
 2901
 2902
 3002-3703
 3901
 4401-4409
 4490-4491
 5000-5100
 5700
 5702
 5900-7003
 7200-7400
 2206A4
 4580
 2217
 2206A5

4N 28C