

ALSO SEE G.L.O. SURVEYS, CORNER RECORDS

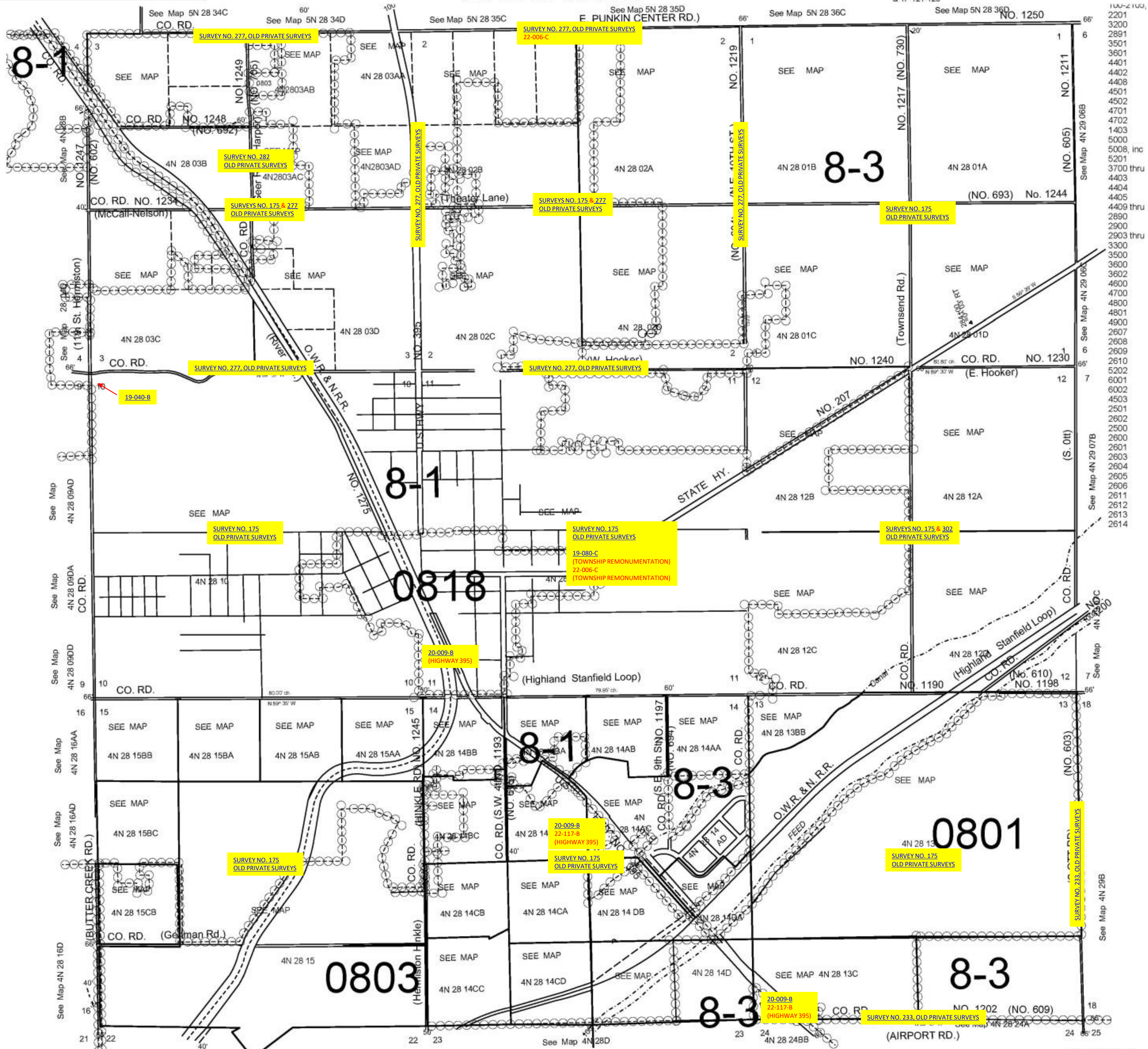
This map was prepared for Assessment & Taxation purposes only and was NOT prepared nor is it suitable for legal, engineering or surveying purposes.

NE 1/4 T4N R28E WM
UMATILLA COUNTY

SCALE 1"= 1000'

INDEX ONLY 4N 28A

AERIAL PHOTO NO. NZ-2P 21-24
& 1P 121-123



Revised: 10-30-13

4N28A