

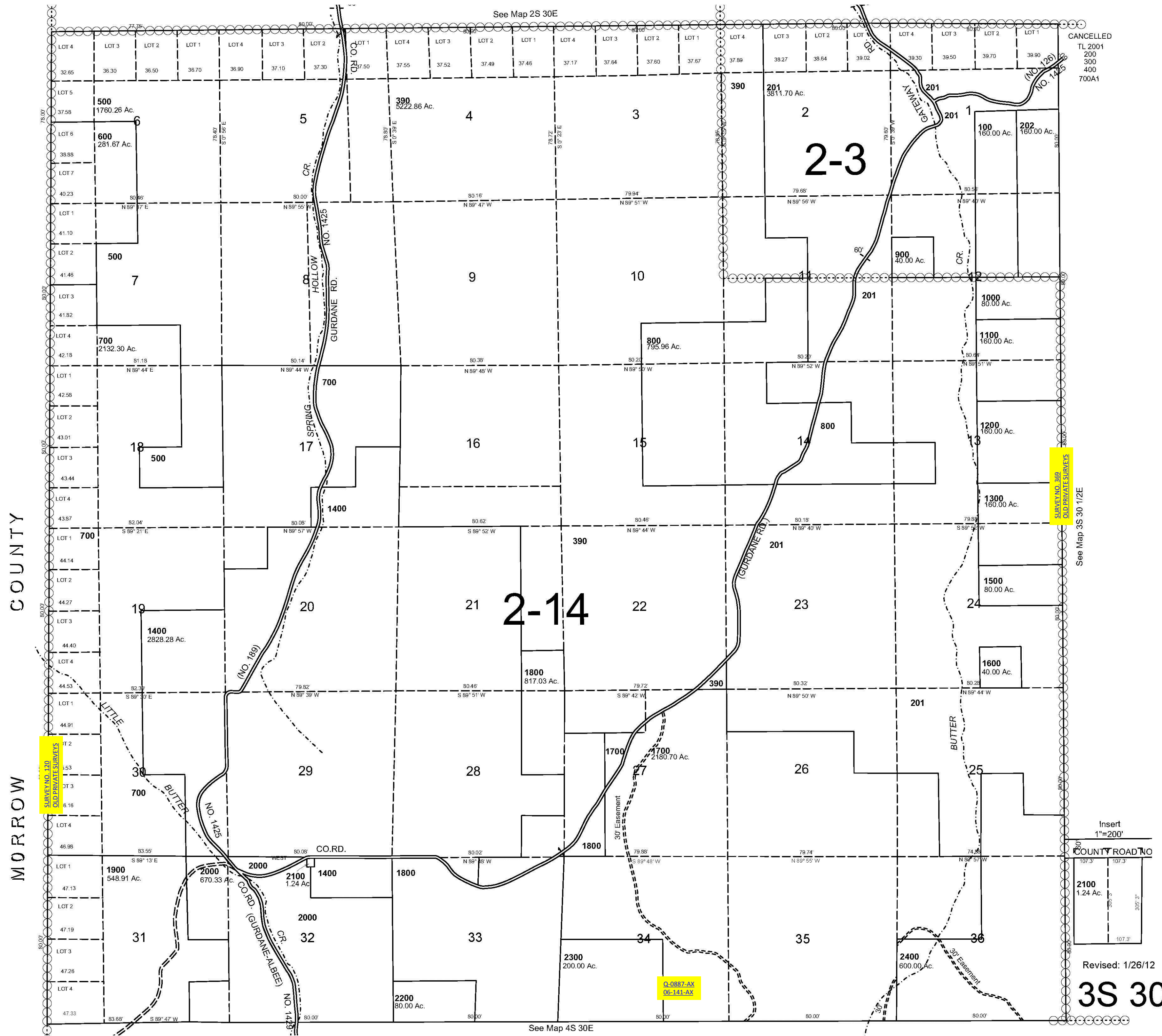
This map was prepared for Assessment & Taxation purposes only and was NOT prepared nor is it suitable for legal, engineering or surveying purposes.

# T3S R30E WM UMATILLA COUNTY

## 3S 30

AERIAL PHOTO NO. NZ 9P 67-72, 10P 4-10, 9P 79-83

SCALE 1" = 2000'



CANCELED  
TL 2001  
200  
300  
400  
700A1

SURVEY NO. 189  
OLD PRIVATE SURVEYS

See Map 3S 30 1/2E

Insert  
1"=200'

COUNTY ROAD NO  
2100  
1.24 Ac.

Revised: 1/26/12

## 3S 30

See Map 4S 30E