

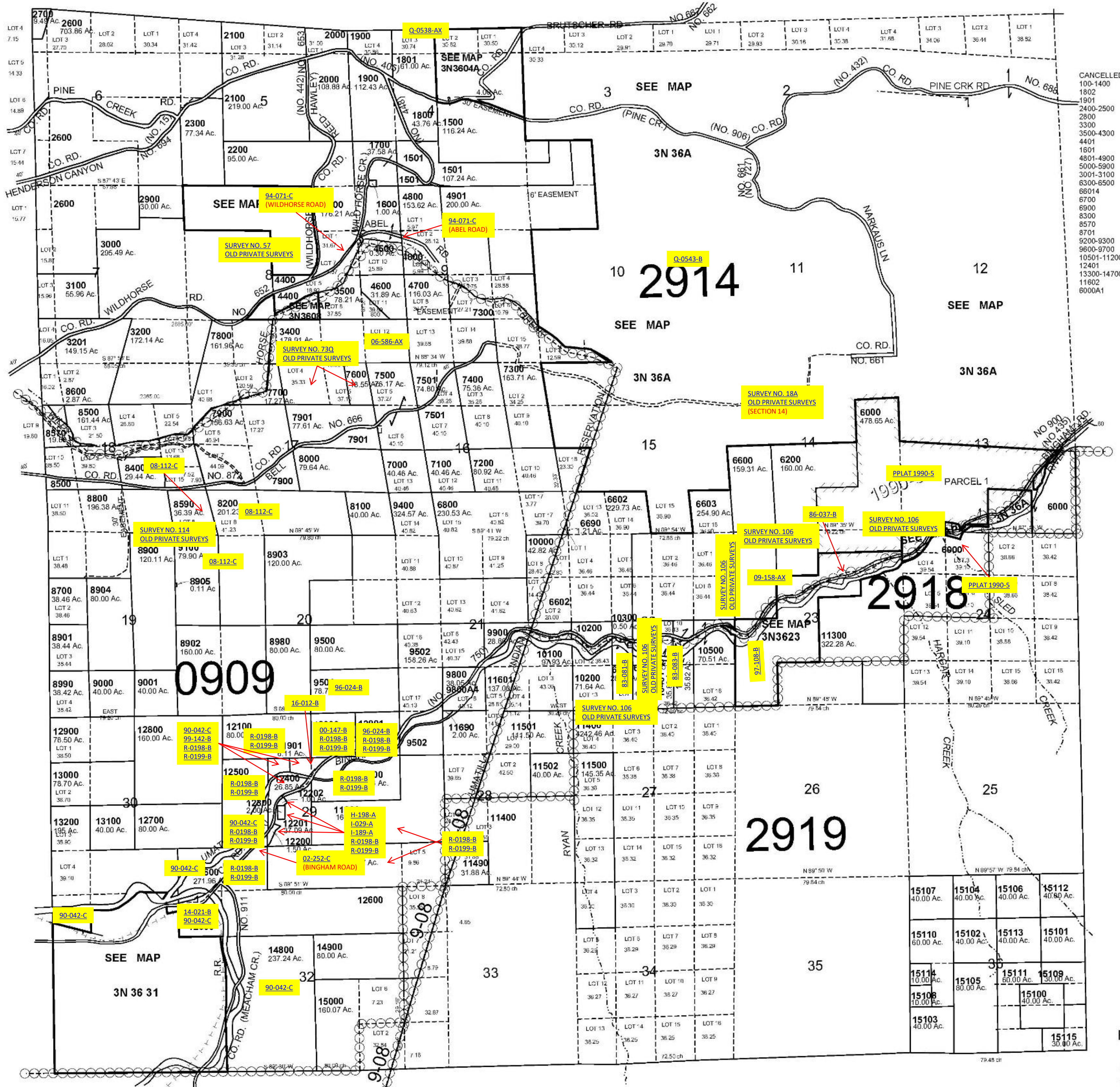
ALSO SEE SURVEYS 11-186-A, 83-180-B, 88-042-C, L-022-C, Q-0546-AX; CORNER RECORDS; G.L.O. SURVEYS; REDFIELD SURVEYS

This map was prepared for Assessment & Taxation purposes only and was NOT prepared nor is it suitable for legal, engineering or surveying purposes.

# T3N R36E WM UMATILLA COUNTY

SCALE 1"=2000'

3N36



- CANCELLED
- 100-1400
- 1802
- 1901
- 2400-2500
- 2800
- 3300
- 3500-4300
- 4401
- 1601
- 4801-4900
- 5000-5900
- 3001-3100
- 6300-6500
- 66014
- 6700
- 6900
- 8300
- 8570
- 8701
- 9200-9300
- 9600-9700
- 10501-11200
- 12401
- 13300-14700
- 11602
- 6000A1

Revised: 11-25-2020

3N 36