

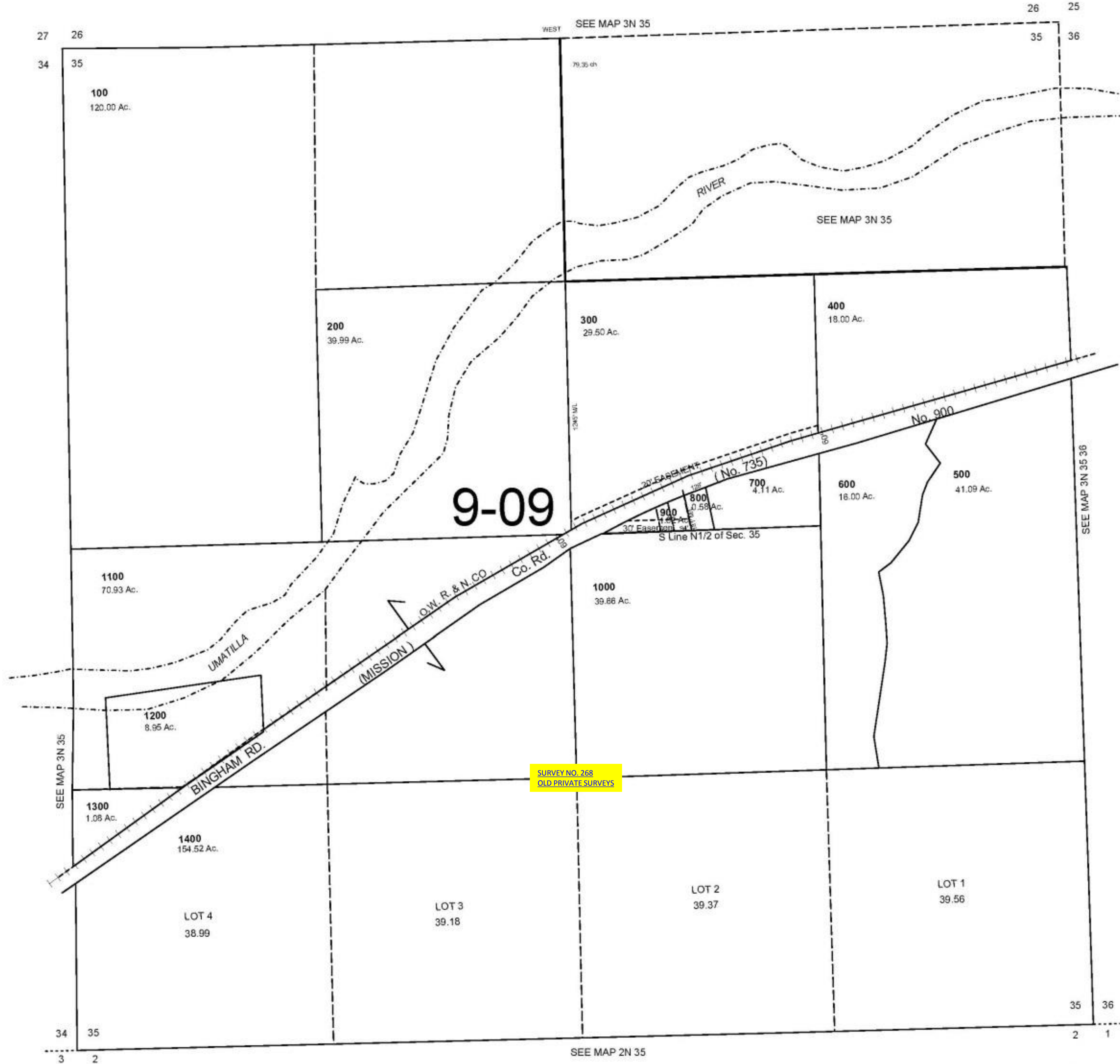
This map was prepared for Assessment & Taxation purposes only and was NOT prepared nor is it suitable for legal, engineering or surveying purposes.



**SEC 35 T3N R35E WM**  
**UMATILLA COUNTY, OR**  
 SCALE: 1" = 400'

**3N 35 35**

AERIAL PHOTO NO. NZ-3P 161-165 & 4P 148-153  
 4P 128-132



SURVEY NO. 268  
 OLD PRIVATE SURVEYS

Revised: 8-17-11

**3N 35 35**