

ALSO SEE SURVEYS 05-070-C, Q-0532-C; CORNER RECORDS; G.L.O. SURVEYS

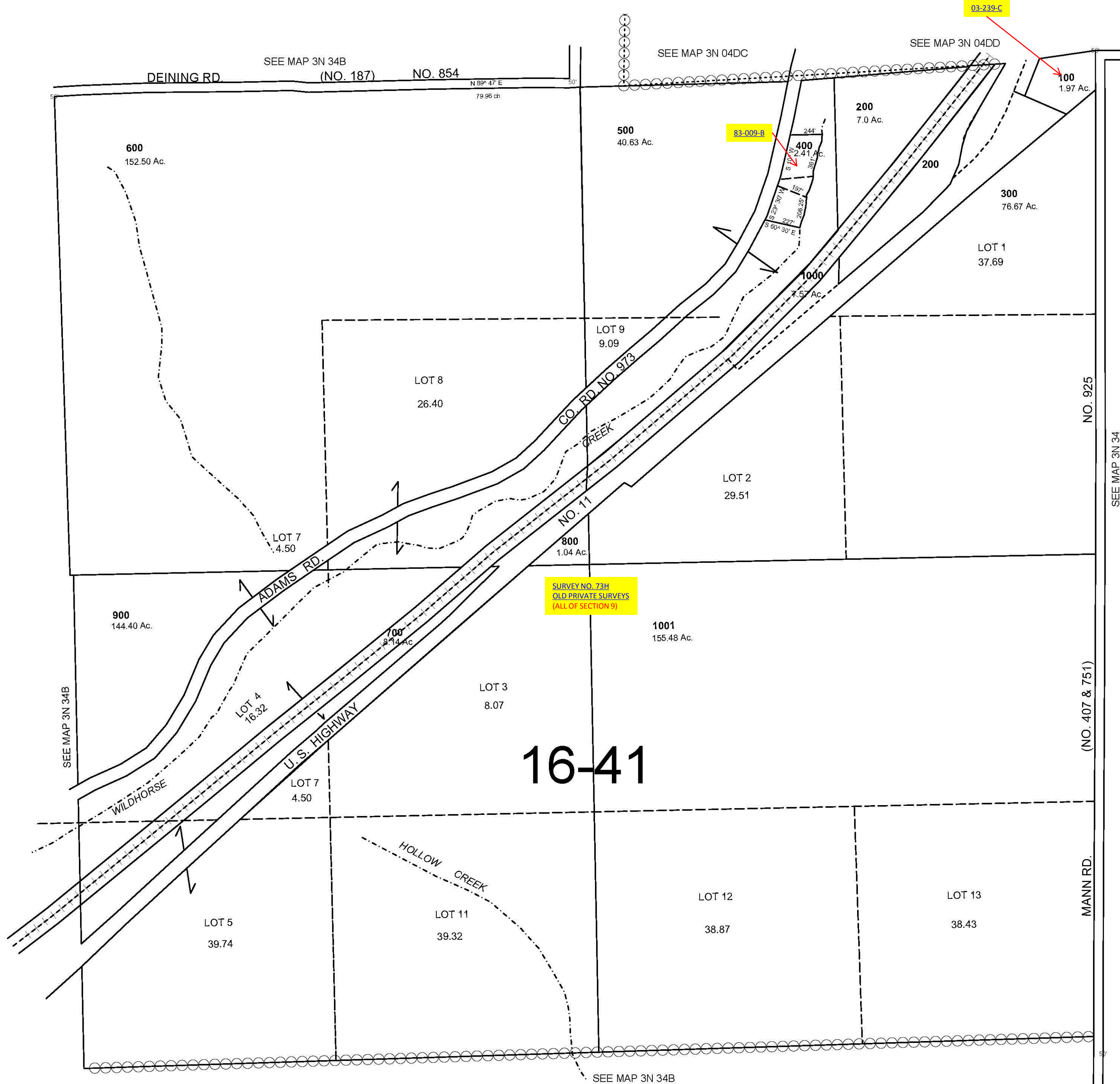
This map was prepared
for assessment purposes

NW1/4 SW1/4 T5N R28E WM
UMATILLA COUNTY

12/27/05

3N 34 09

SCALE 1"=400'



3N 34 09