

ALSO SEE SURVEYS 05-070-C, Q-0532-C, 07-113-B, 11-066-C

This map was prepared for Assessment & Taxation purposes only and was NOT prepared nor is it suitable for legal, engineering or surveying purposes.

Cancelled Tax Lots
102
1701

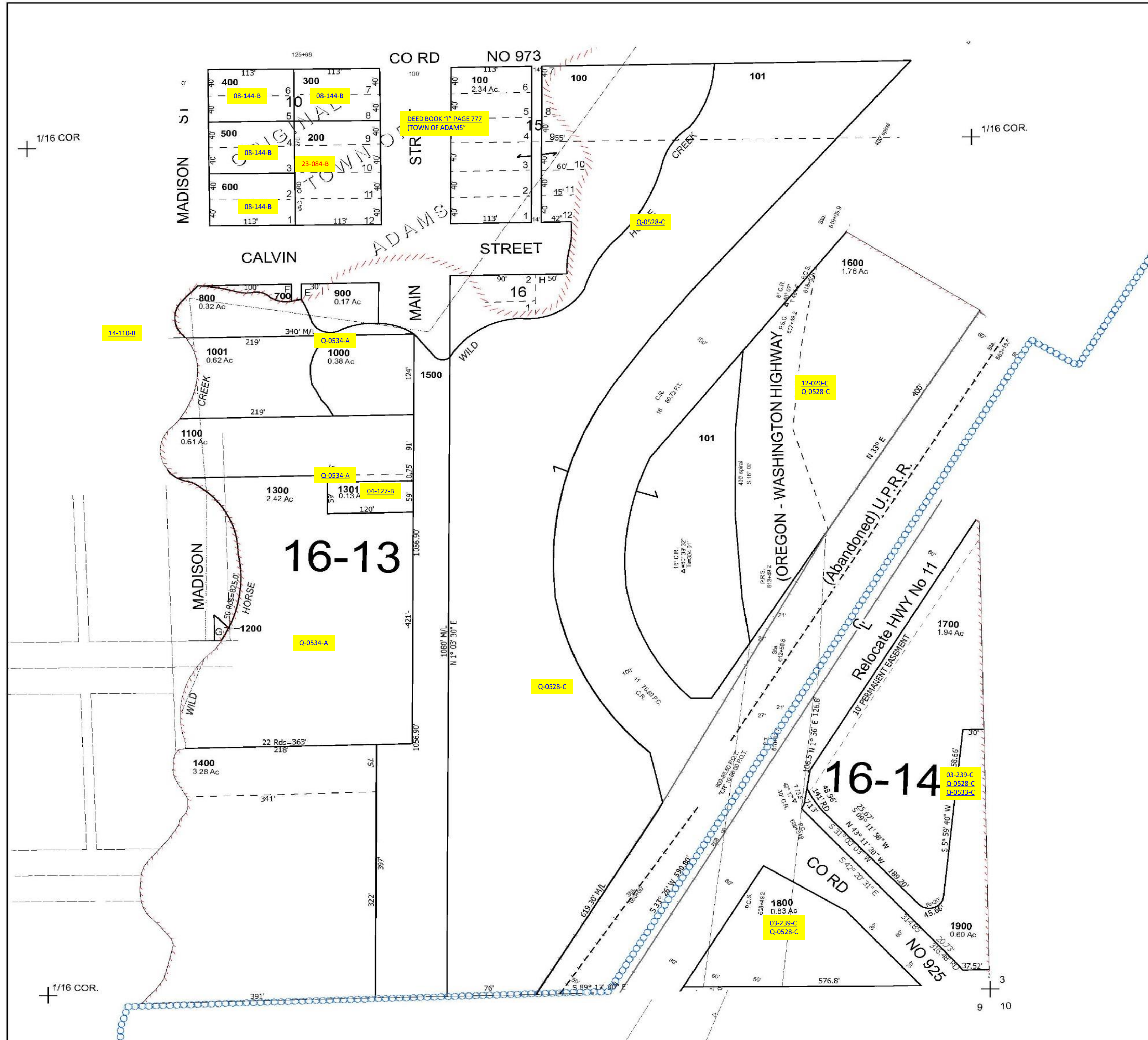
SE 1/4 SE 1/4 SEC 04 T3N R34E WM UMATILLA COUNTY

Adams

SCALE 1" = 100'

3N 34 04DD

See Map 3N 34 04DA



See Map 3N 34 04DC

See Map 3N 34 03

Revised 11/14/2024

See Map 3N 34 09

3N 34 04DD