

ALSO SEE SURVEY 05-070-C

This map was prepared for Assessment & Taxation purposes only and was NOT prepared nor is it suitable for legal, engineering or surveying purposes.

NE 1/4 SE 1/4 SEC 04 T3N R34E WM UMATILLA COUNTY

Adams

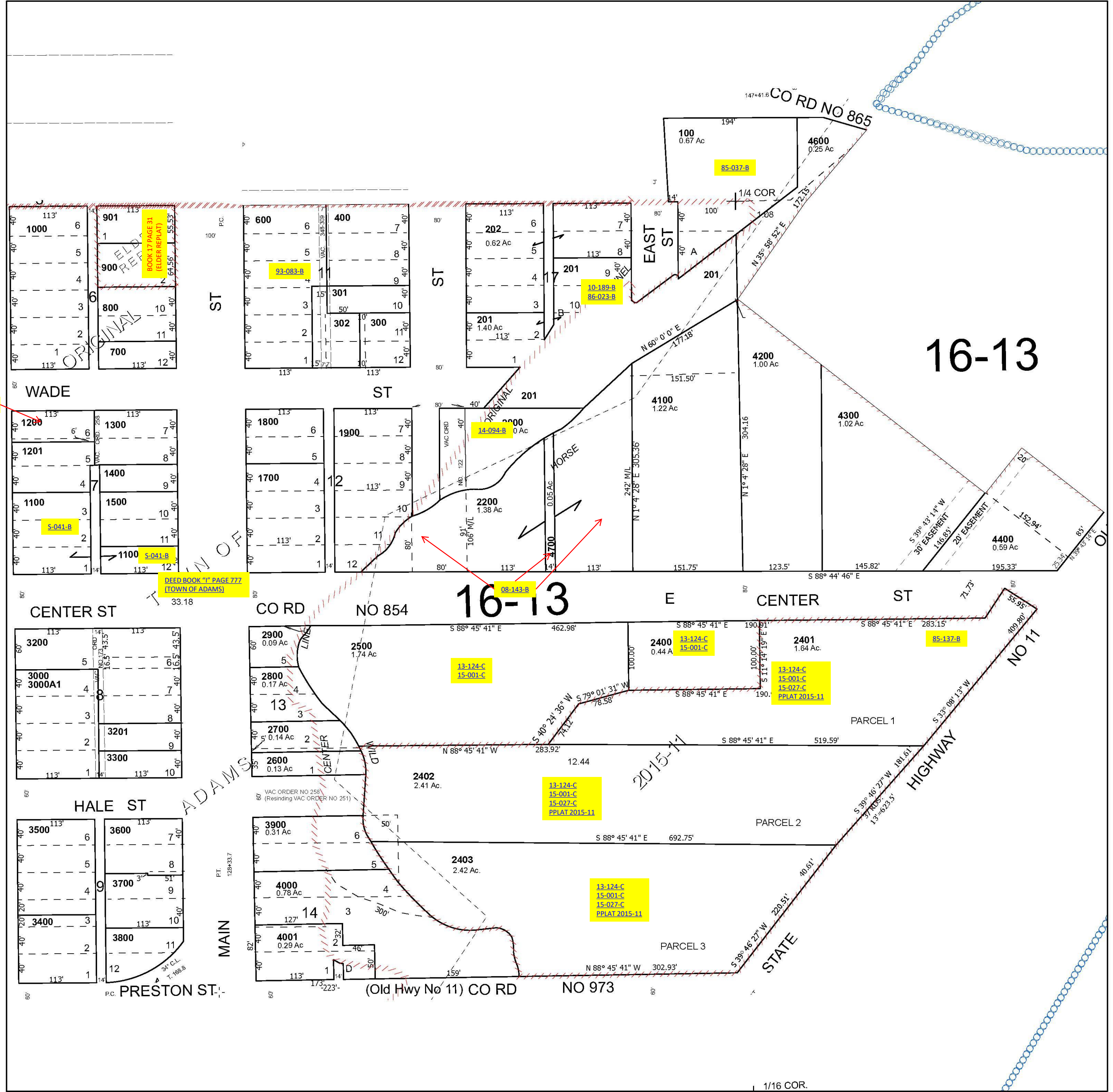
SCALE 1" = 100'

3N 34 04DA

Cancelled Tax Lots

- 200
- 203
- 303
- 1202
- 2100
- 2300
- 3001
- 3100
- 4500
- 500

See Map 3N 34 04AD



See Map 3N 34 04DB

See Map 3N 34 03CB

Revised 11/14/2024

See Map 3N 34 04DD

3N 34 04DA