

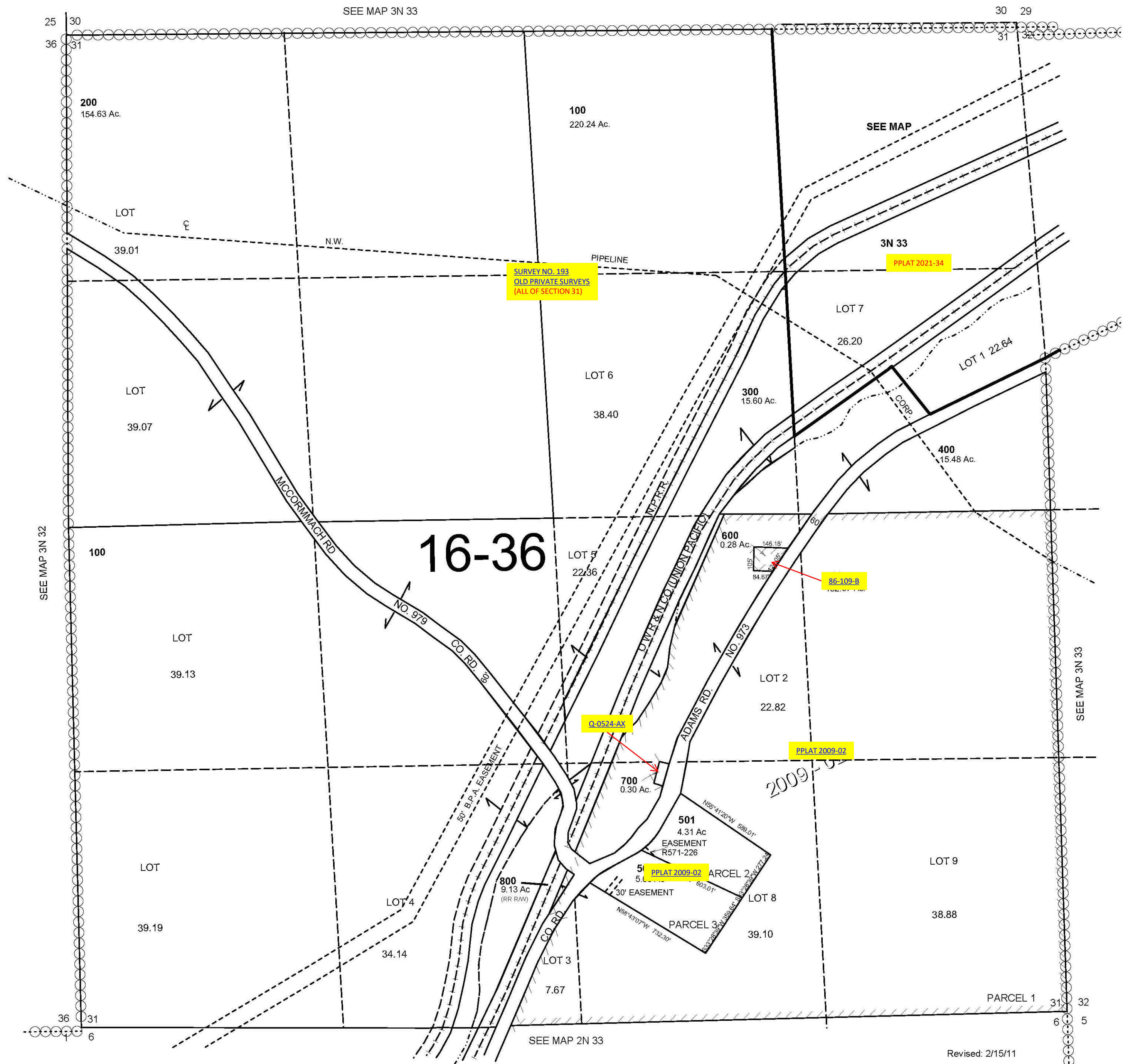
This map was prepared for Assessment & Taxation purposes only and was NOT prepared nor is it suitable for legal, engineering or surveying purposes.

SEC 31 T3N R33E WM UMATILLA COUNTY

3N 33 31

AERIAL PHOTO NO. NZ-5P 173-178, 4P 159-167 & 114-121

1"=400'



Revised: 2/15/11

3N 33 31