

ALSO SEE SURVEYS 06-462-C; CORNER RECORDS; G.L.O. SURVEYS

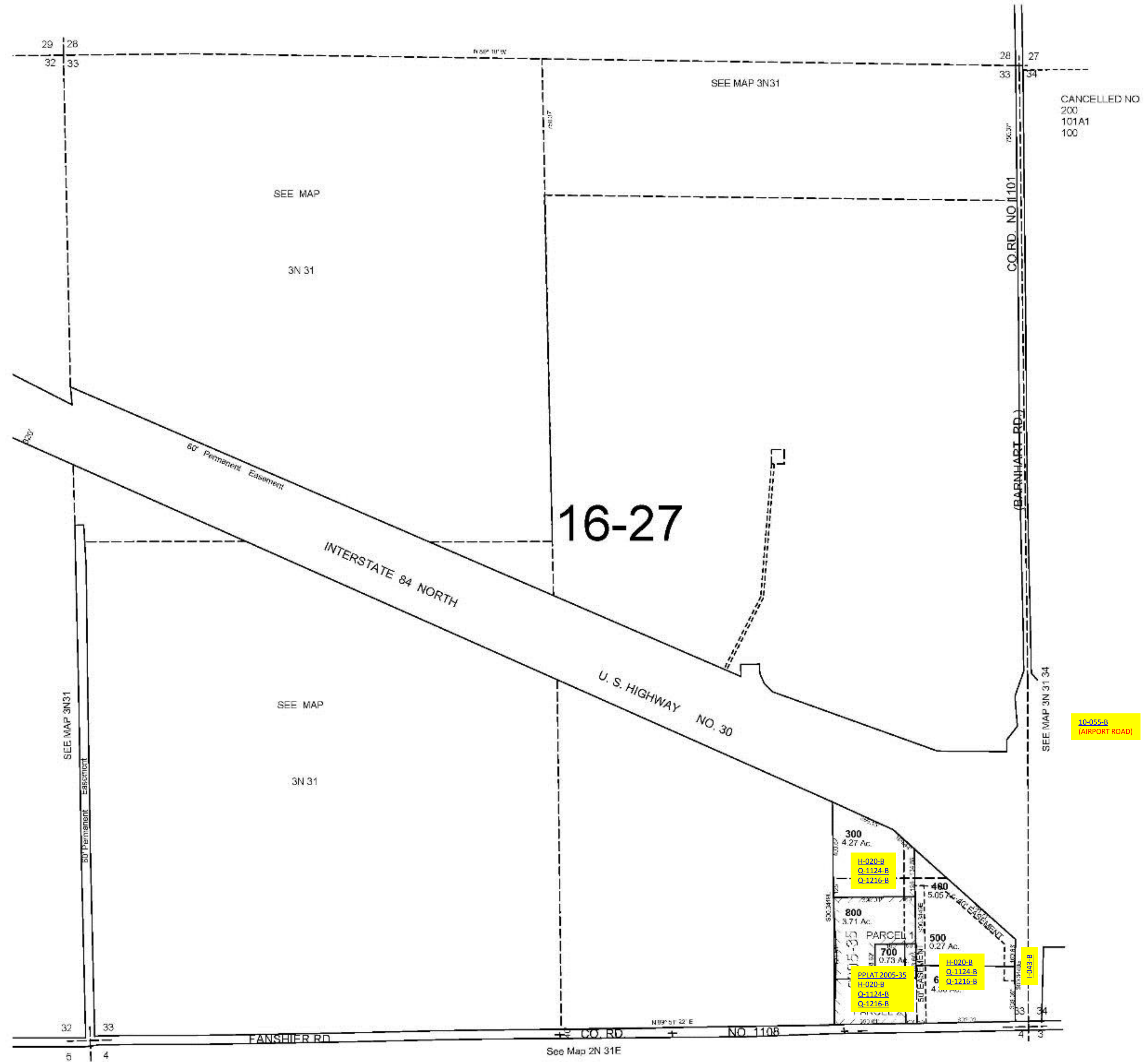
This map was prepared for Assessment & Taxation purposes only and was NOT prepared nor is it suitable for legal, engineering or surveying purposes.

SEC 33 T3N R31E WM UMATILLA COUNTY

1"=400'

3N 31 33

AERIAL PHOTO NO 2P 68-70, 72, 121-124, 132, 134 & 136



Revised: 12-29-17

3N 31 33