

ALSO SEE SURVEYS 15-050-C, 15-052-C, 06-462-C, 13-529-C, CORNER RECORDS, G.L.O. SURVEYS

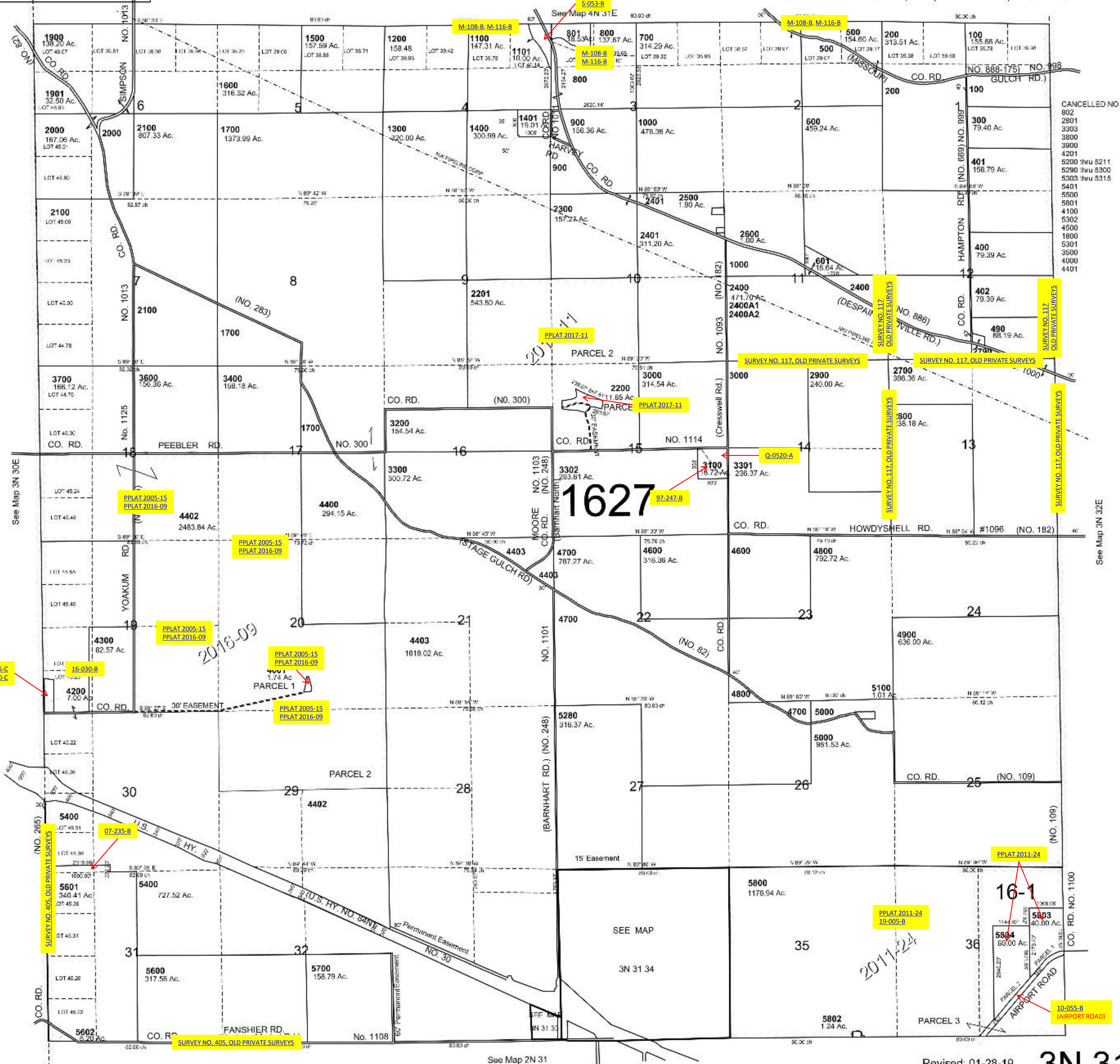
This map was prepared for Assessment & Taxation purposes only and was NOT prepared nor is it suitable for legal, engineering or surveying purposes.

T3N R31E WM UMATILLA COUNTY

3N 31

AERIAL PHOTO NO. 2P 68-70, 72, 121-124, 132-134 & 136

1"=2000'



Revised: 01-28-19

3N 31