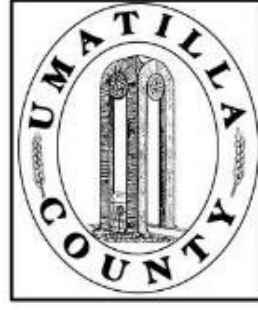


ALSO SEE SURVEYS 05-086-B, 05-087-B, 07-053-B, 13-193-A, Q-0033-C, Q-0034-C

This map was prepared for Assessment & Taxation purposes only and was NOT prepared nor is it suitable for legal, engineering or surveying purposes.

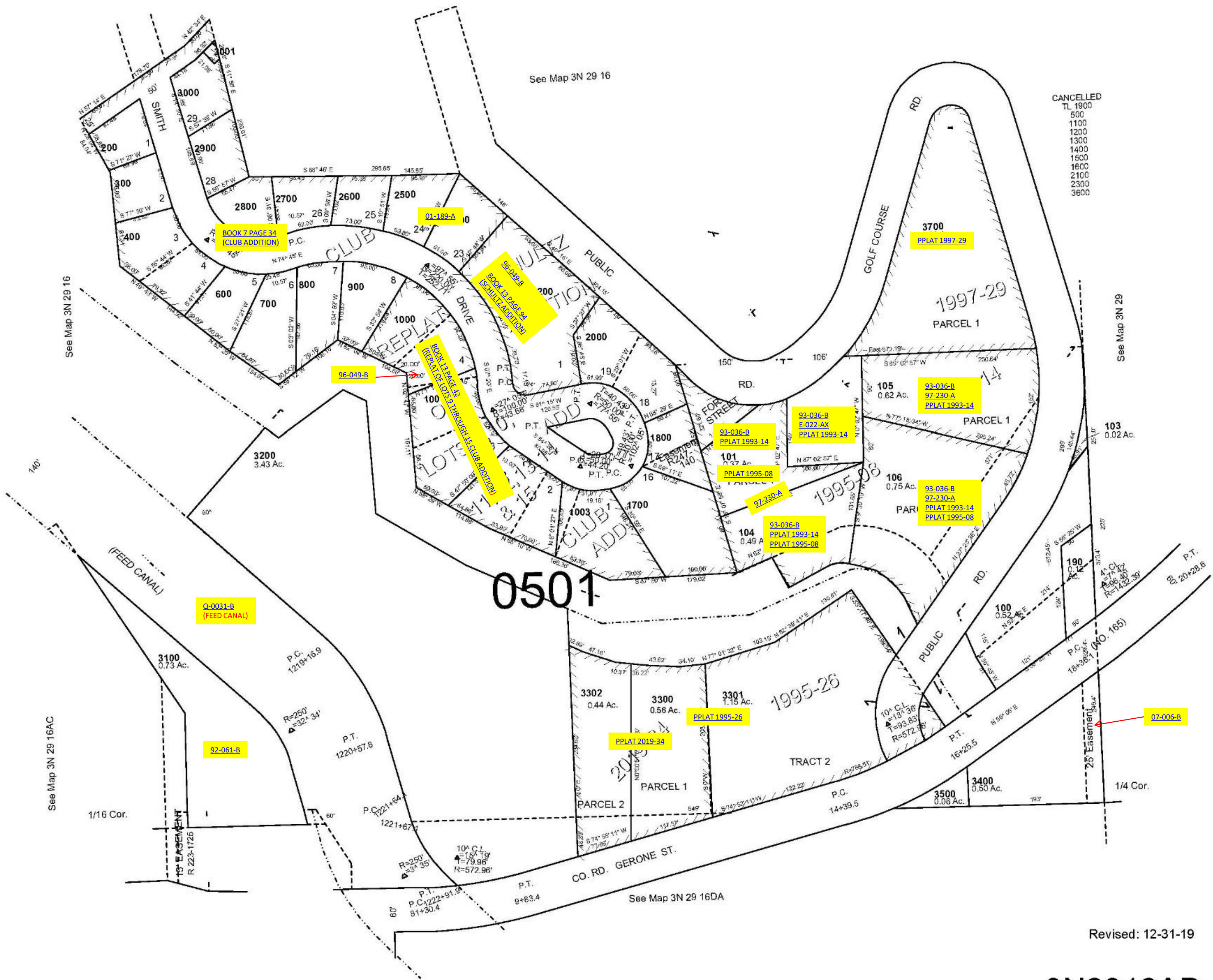


SE 1/4 NE 1/4 SEC 16 T 3N R 29E WM  
UMATILLA COUNTY, OR

3N2916AD

SCALE: 1" = 100'

AERIAL PHOTO NO. NZ-2P-111



Revised: 12-31-19

3N2916AD