

ALSO SEE SURVEYS 13-109-B, Q-0044-B, Q-0045-B, 11-038-C, 95-060-B, H-107-B, M-079-C, Q-0511-AX, S-156-C, S-158-C; CORNER RECORDS; G.L.O. SURVEYS

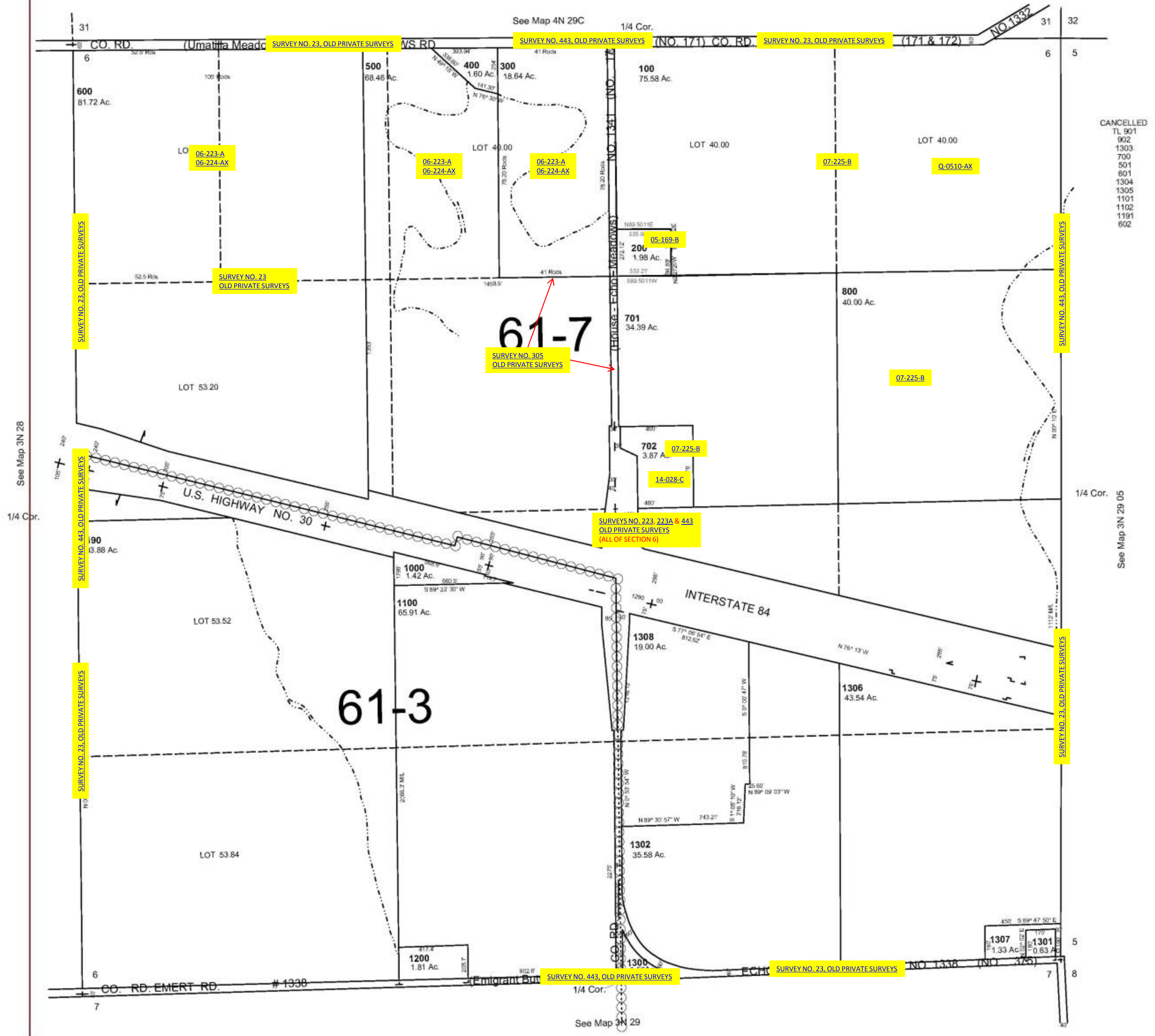
This map was prepared
for assessment purposes

SEC 6 T3N R29E WM UMATILLA COUNTY

10/31/05

3N 29 06
AERIAL PHOTO NO. NZ 2P 85 & 86

1"=400'



3N 29 06