

ALSO SEE SURVEY Q-0045-B

This map was prepared for Assessment & Taxation purposes only and was NOT prepared nor is it suitable for legal, engineering or surveying purposes.

NE 1/4 NW 1/4 SEC 05 T3N R29E WM UMATILLA COUNTY

Stanfield

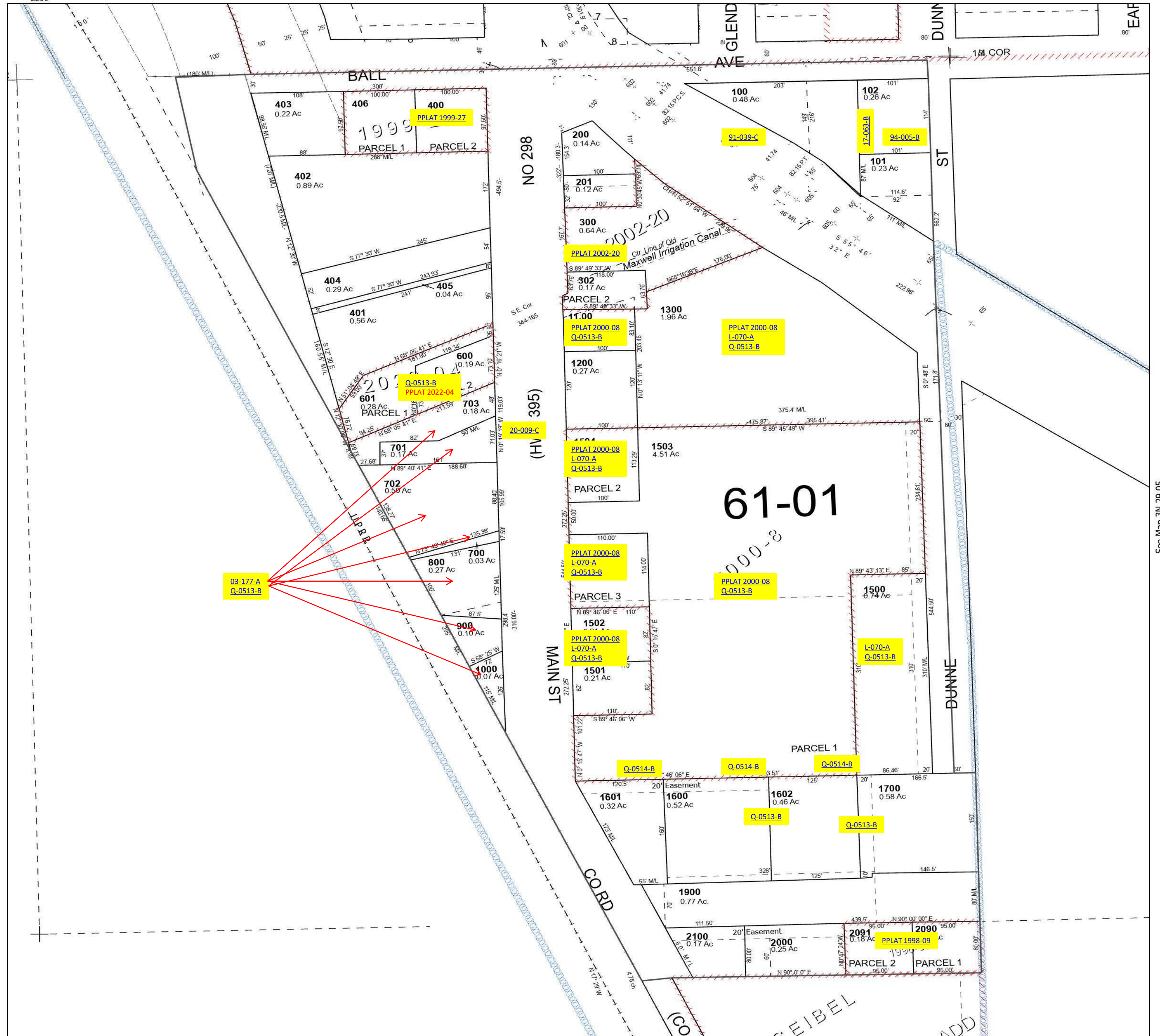
SCALE 1" = 100'

Cancelled Tax Lots

103	2300
104	2400
202	2401
301	
500	
1301	
1302	
1400	
1800	
2200	

See Map 4N 29 32CD

3N 29 05BA



Revised 4/27/2023

See Map 3N 29 05

3N 29 05BA