

This map was prepared for Assessment & Taxation purposes only and was NOT prepared nor is it suitable for legal, engineering or surveying purposes.

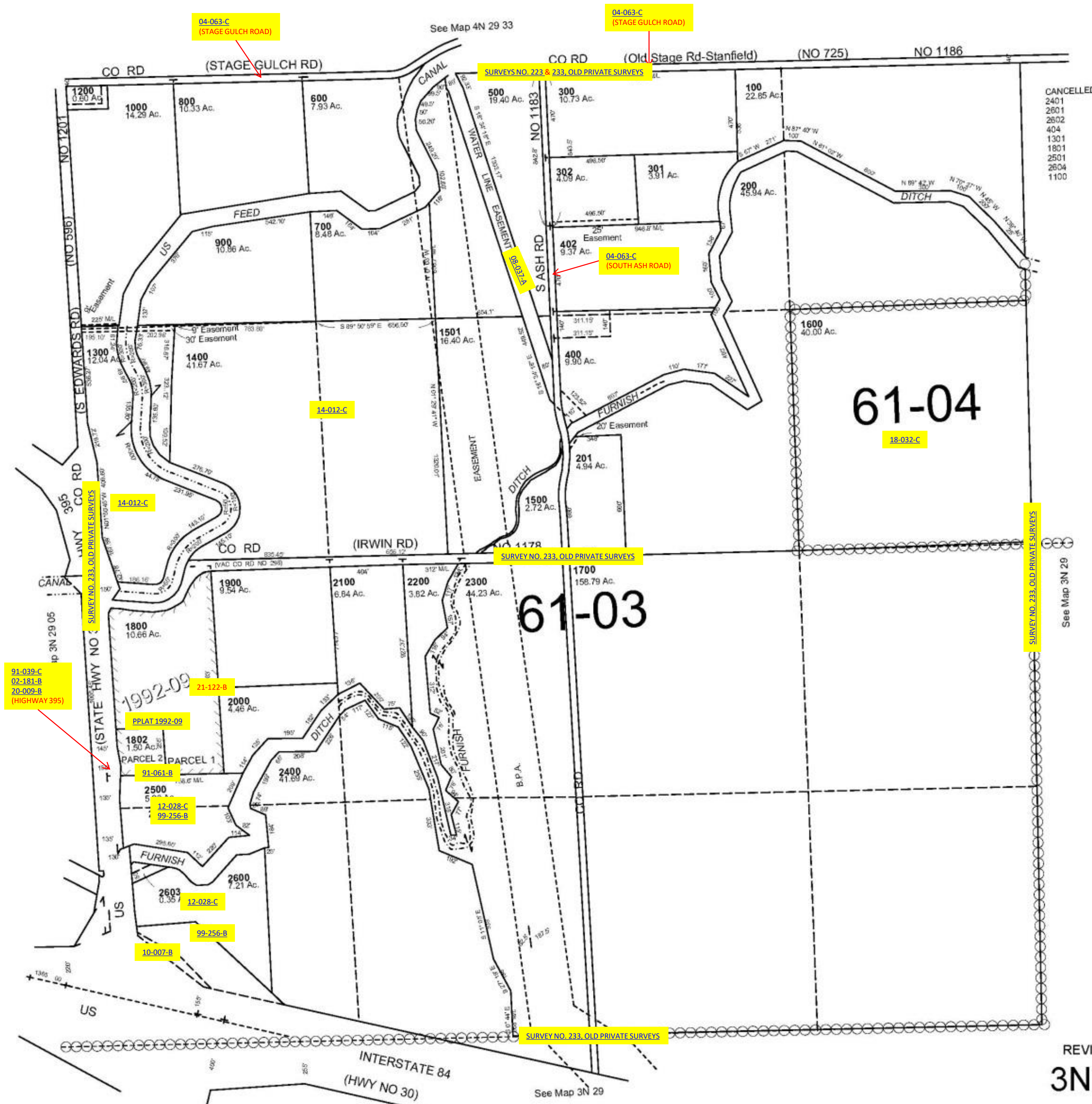


SEC 4 T 3N R 29EWM UMATILLA COUNTY

SCALE: 1" = 400'

3N 29 04

AERIAL PHOTO NO. NZ-2P-84



REVISED: 5/1/14
3N 29 04