

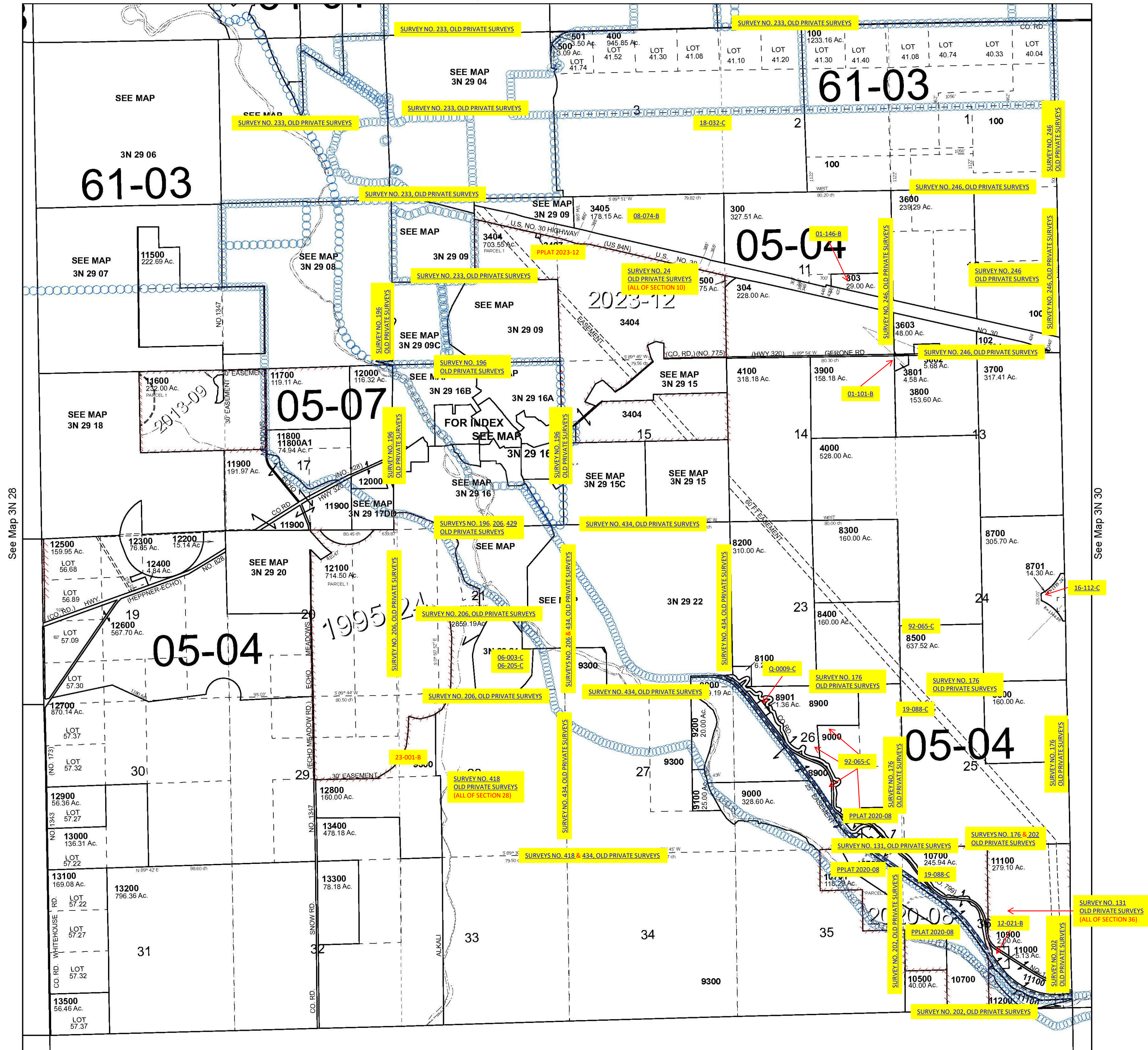
This map was prepared for Assessment & Taxation purposes only and was NOT prepared nor is it suitable for legal, engineering or surveying purposes.

T3N R29E WM UMATILLA COUNTY

SCALE 1"=2,000'

3N 29

Cancelled Tax Lots	1700	2400	3001	4101	5000	5700	6400	7100	7800	8500	9200
101	800	1700	2400	3001	4101	5000	5700	6400	7100	7800	8500
103	900	1702	2500	3100	4200	5100	5800	6500	7200	7900	8600
105	901	1800	2590	3200-3202	4300	5200	5901	6600	7300	8000	8700
200	1000	1804	2600-2603	3300-3302	4400	5300	6000-5904	6700	7400	8100	8800
202	1100	1900	2700	3400	4500	5400	6100-6002	6800	7500	8200	8900
301	1200	2000	2800	3402	4600	5400	6100-6106	6701	7600	8400	9100
302	1300	2001	2801	3403	4601	5500	6200-6204	6800-6803	7801	9401	10300
305	1400	2100	2900	3406	4700	5501	6300	6900-6901	7700	9500	10400
600	1500	2200	2901	3601	4800	5600	6302	7000	7701	9600	11400
700	1600	2300	2990	3701	4900-4902	5601	6303	7100	7701	9600	11400



See Map 3N 28

See Map 3N 30

Revised 9/17/2024

See Map 2N 29

3N 29