

THIS MAP WAS PREPARED FOR
ASSESSMENT PURPOSES ONLY

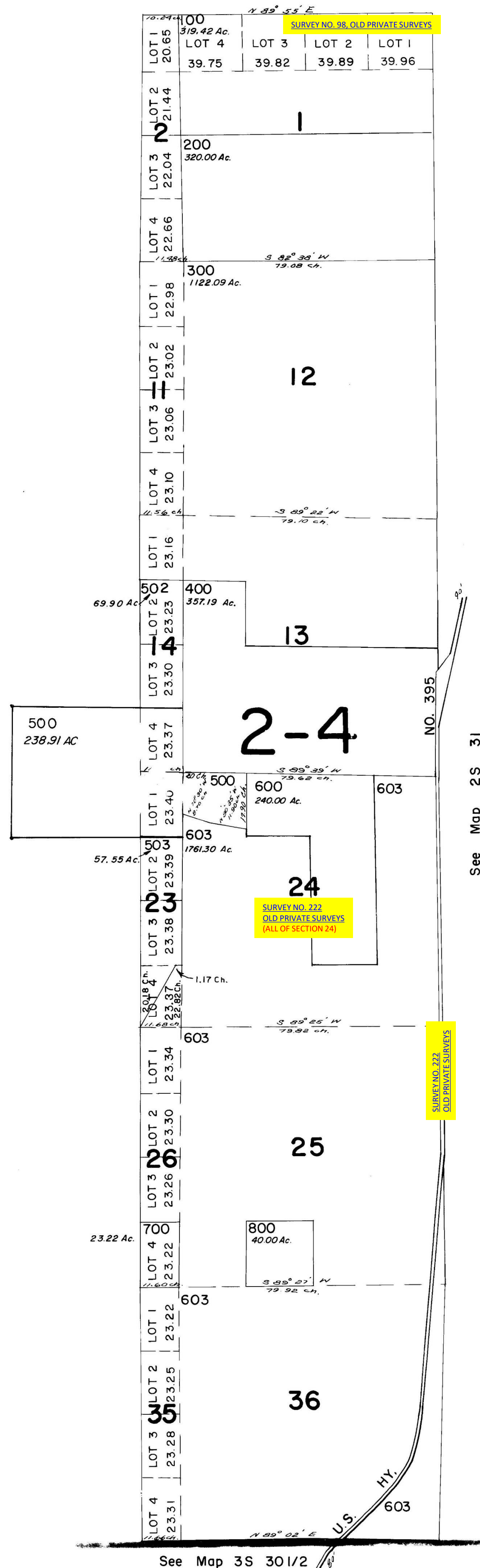
T.2S. R.301/2E.WM.
UMATILLA COUNTY

1"=2000'

See Map 1S 301/2

2S 301/2

Aerial Photo No. NZ- 7P - 140
8P - 31, 32
8P - 53, 54



CANCELLED
T.L. 401
601
602
501
504

See Map 2S 31

See Map 3S 301/2

2S 301/2