

ALSO SEE CORNER RECORDS; G.L.O. SURVEYS; REDFIELD SURVEYS

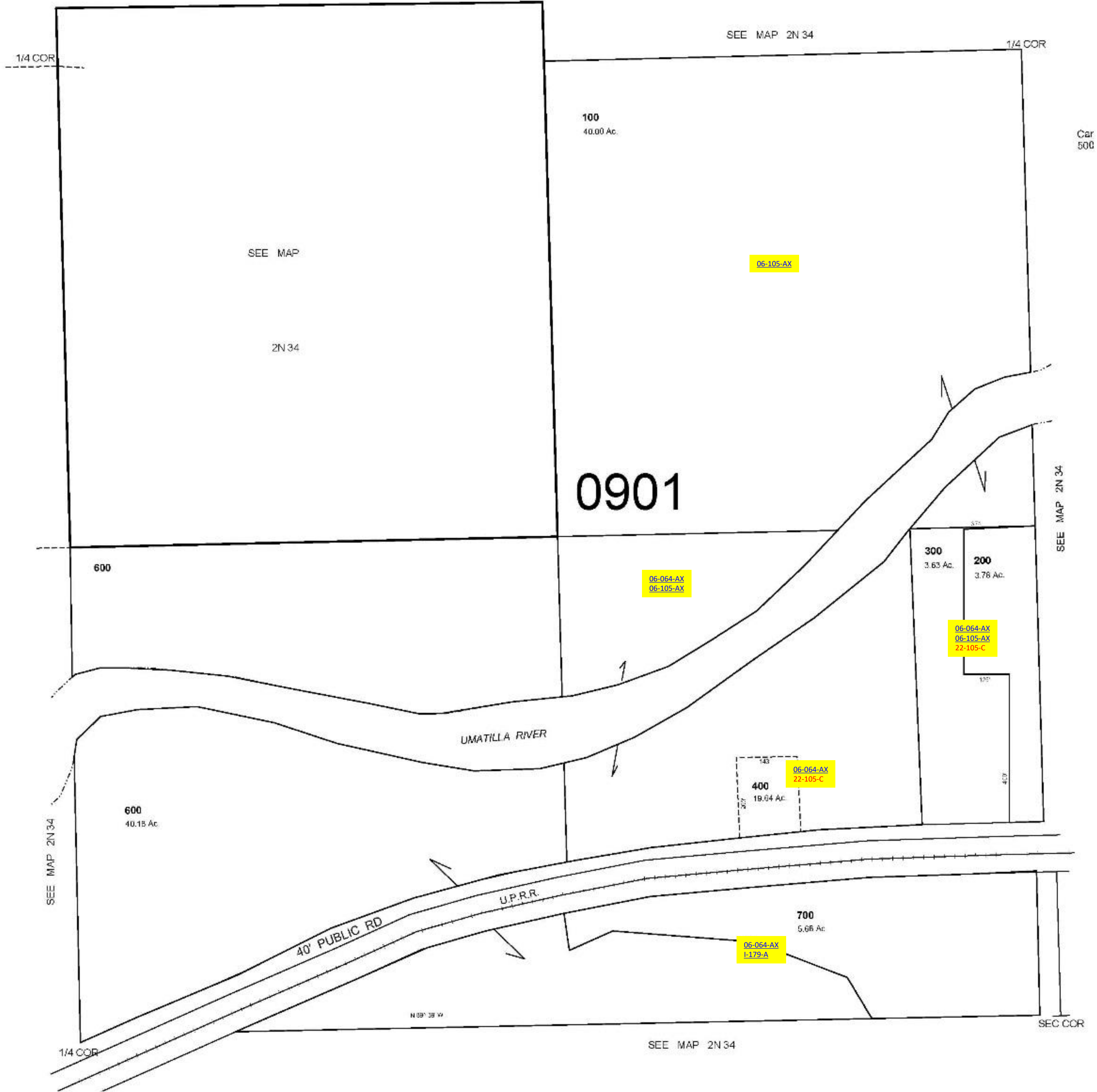
This map was prepared for Assessment & Taxation purposes only and was NOT prepared nor is it suitable for legal, engineering or surveying purposes.

SE1/4 SEC 5 T2N R34E WM
UMATILLA COUNTY

2N 34 05D

AERIAL PHOTO NO. NZ 4P 39-41, 68-71, & 91-95

SCALE 1"=200'



Revised: 11-15-19

2N 34 05D