

This map was prepared for Assessment & Taxation purposes only and was NOT prepared nor is it suitable for legal, engineering or surveying purposes.

Cancelled Tax Lots

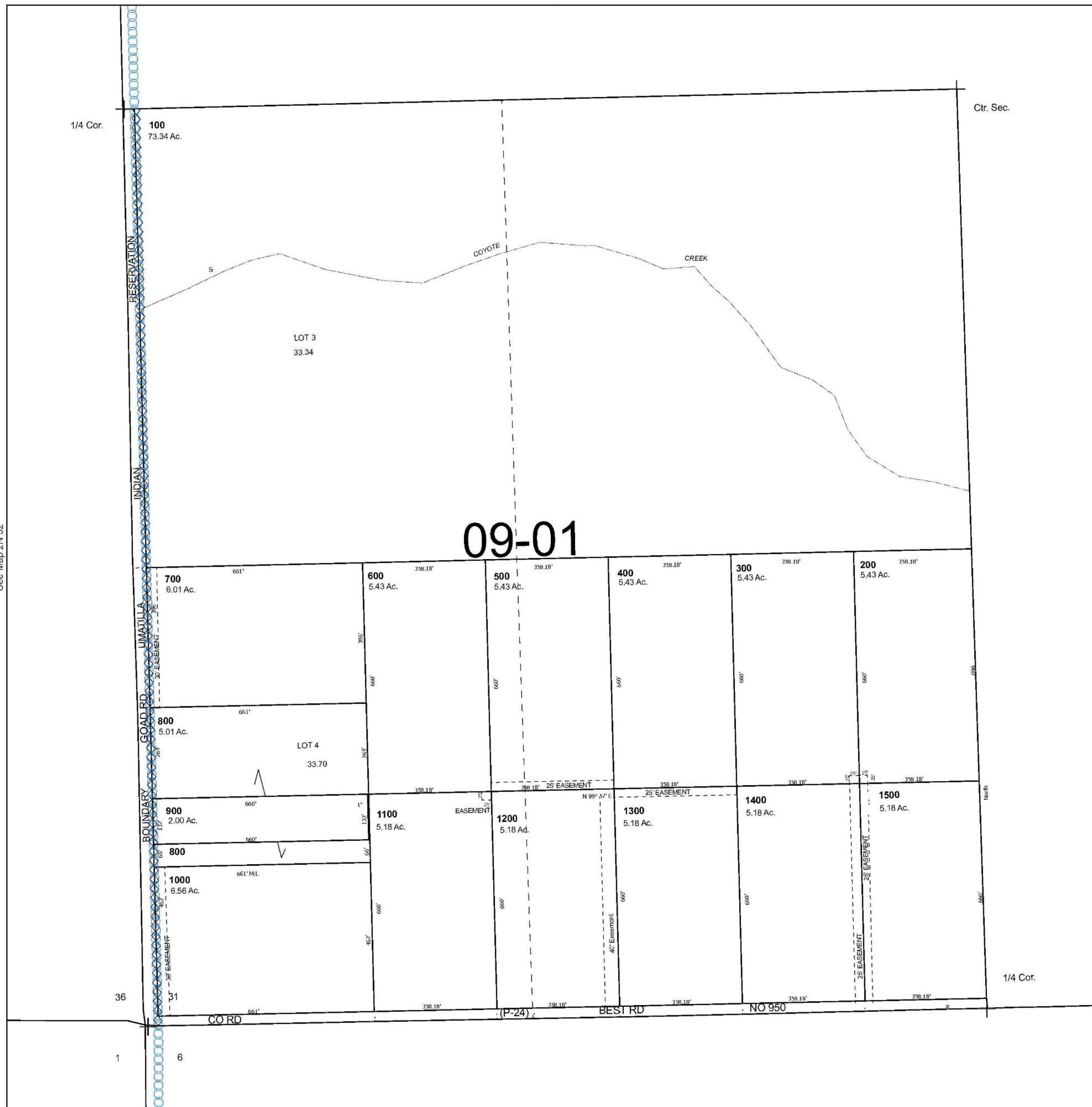
SW 1/4 SEC 31 T2N R33E WM

2N 33 31C

UMATILLA COUNTY

SCALE 1" = 200'

See Map 2N 33



See Map 2N 32

See Map 2N 33

Revised 12/2/2024

See Map 1N 33

2N 33 31C