

This map was prepared for Assessment & Taxation purposes only and was NOT prepared nor is it suitable for legal, engineering or surveying purposes.

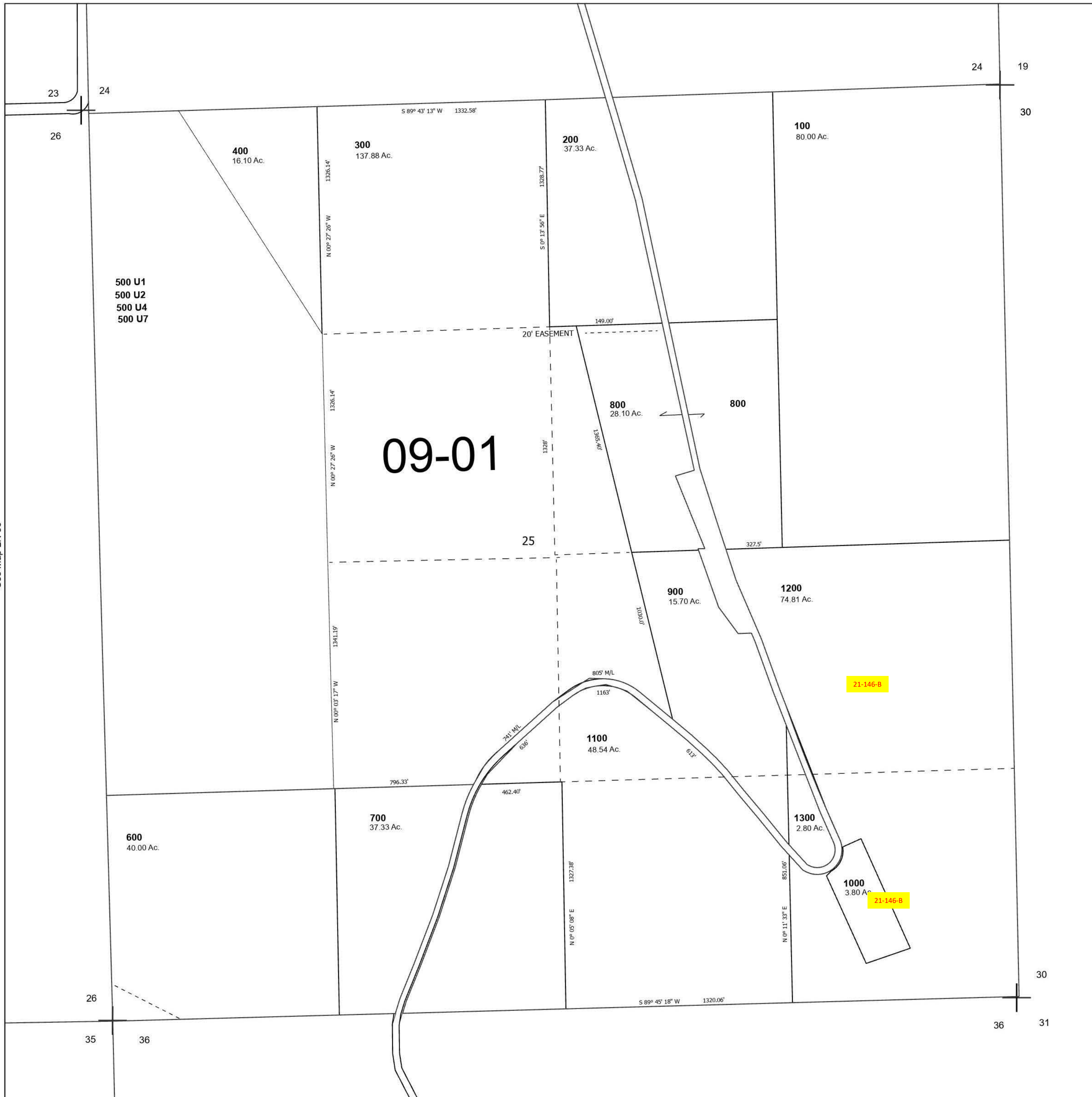
Cancelled Tax Lots

# SEC 25 T2N R33E WM UMATILLA COUNTY

## 2N 33 25

SCALE 1" = 400'

See Map 2N 33 24



See Map 2N 33

See Map 2N 34

Revised 5/17/2023

See Map 2N 33

## 2N 33 25