

ALSO SEE SURVEY 94-012-B; CORNER RECORDS; G.L.O. SURVEYS; REDFIELD SURVEYS

This map was prepared for Assessment & Taxation purposes only and was NOT prepared nor is it suitable for legal, engineering or surveying purposes.

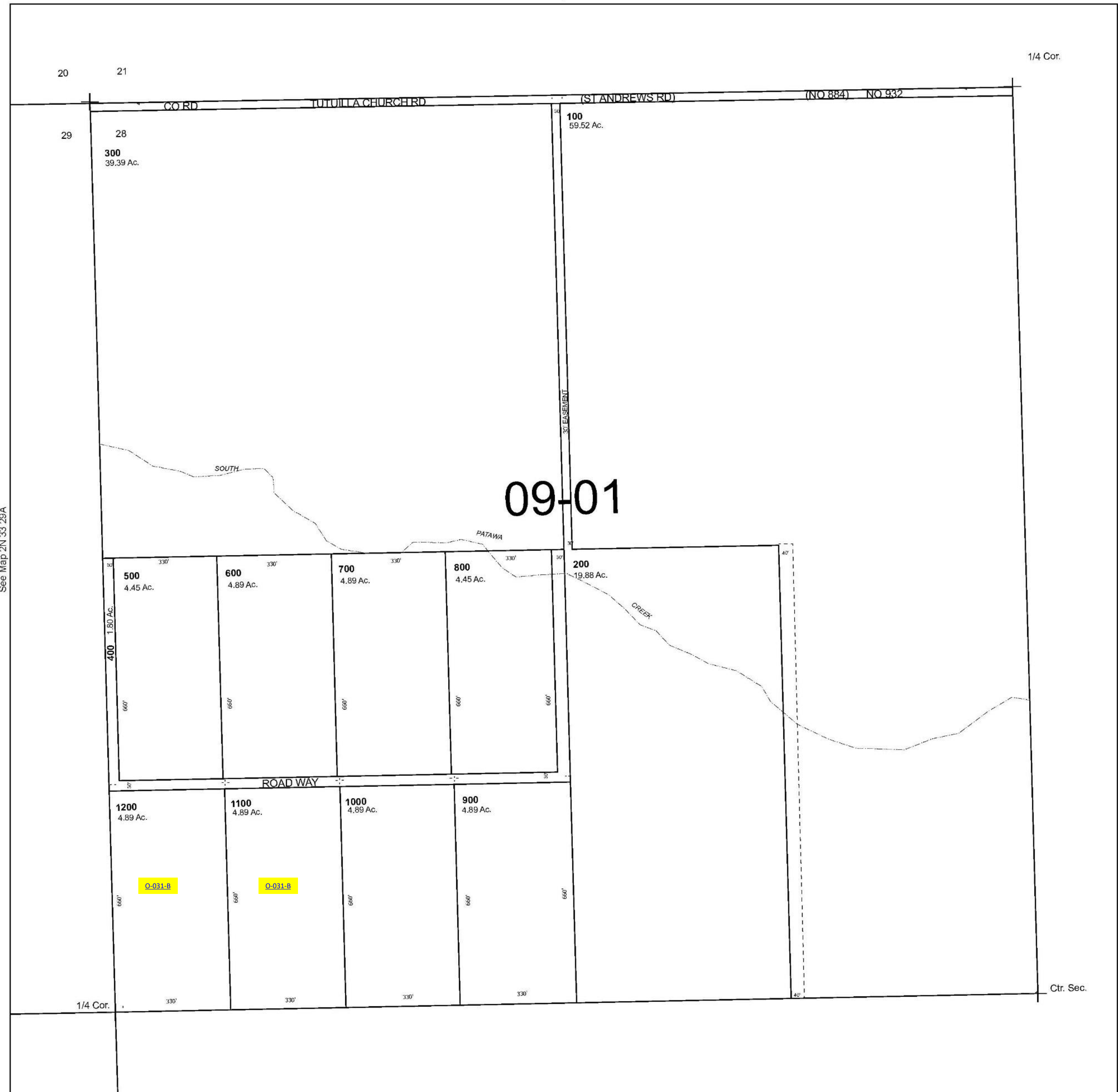
Cancelled Tax Lots

# NW 1/4 SEC 28 T2N R33E WM UMATILLA COUNTY

## 2N 33 28B

SCALE 1" = 200'

See Map 2N 33



See Map 2N 33 29A

See Map 2N 33

Revised 12/2/2024

See Map 2N 33

## 2N 33 28B