

This map was prepared for Assessment & Taxation purposes only and was NOT prepared nor is it suitable for legal, engineering or surveying purposes.

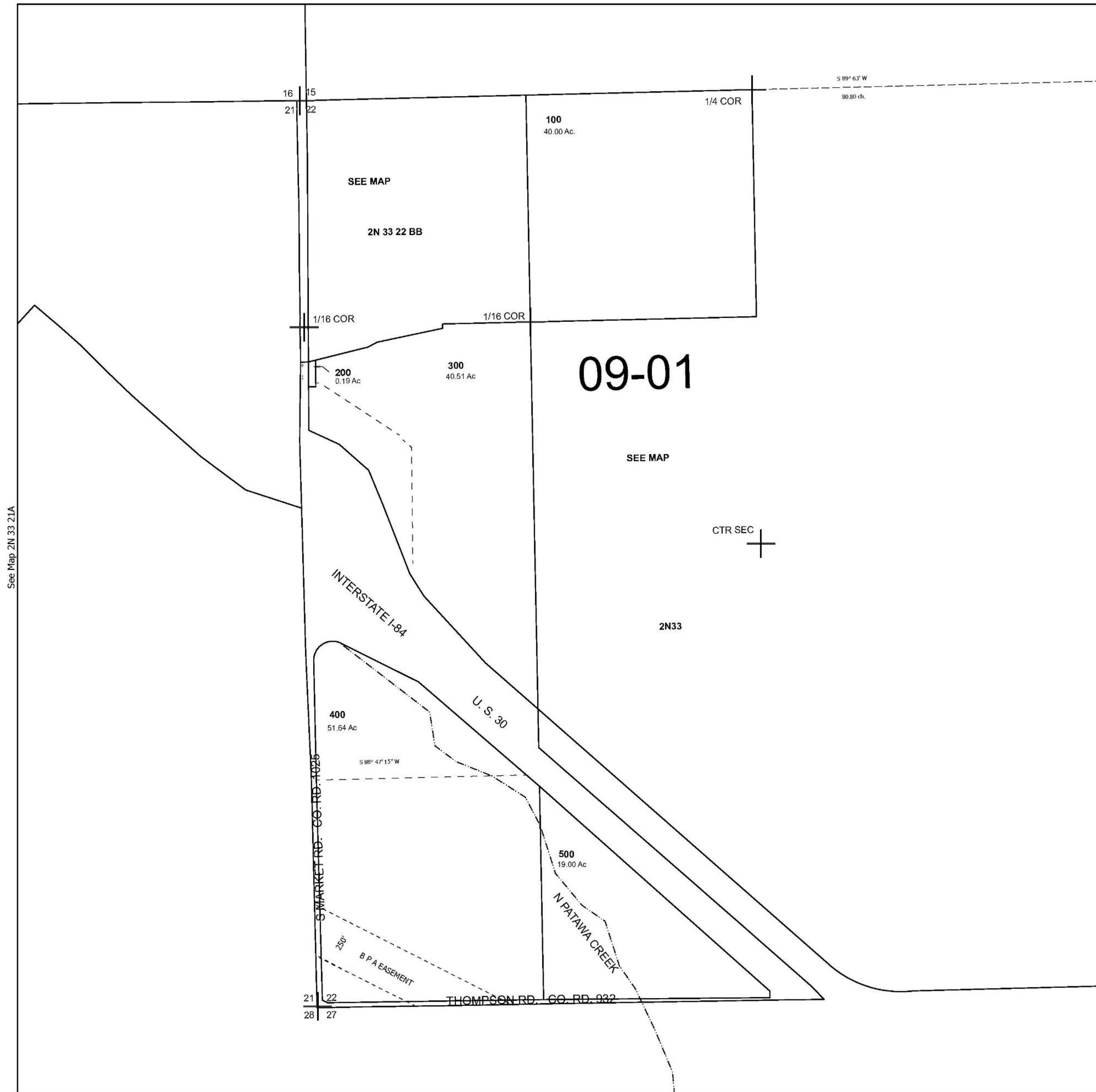
Cancelled Tax Lots

# SEC 22 T2N R33E WM UMATILLA COUNTY

## 2N 33 22

SCALE 1" = 400'

See Map 2N 33



See Map 2N 33 21A

See Map 2N 33

Revised 12/18/2024

See Map 2N 33

## 2N 33 22