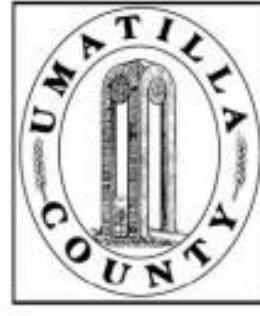


This map was prepared for Assessment & Taxation purposes only and was NOT prepared nor is it suitable for legal, engineering or surveying purposes.

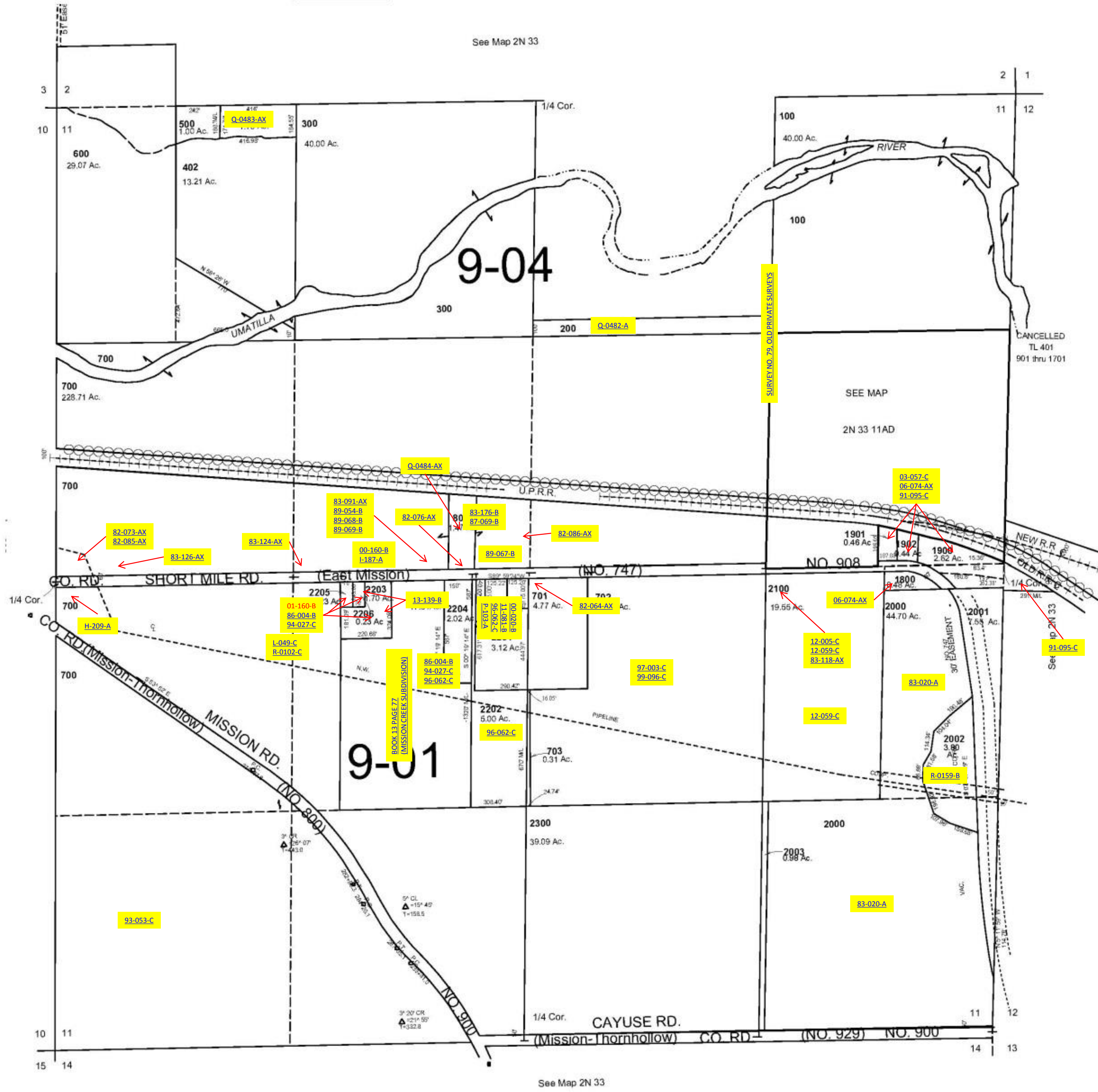


SEC 11 T 2N R33E WM UMATILLA COUNTY, OR

2N 33 11

SCALE: 1" = 400'

AERIAL PHOTO NO 4P 97-99



Revised: 05-23-12

2N 33 11