

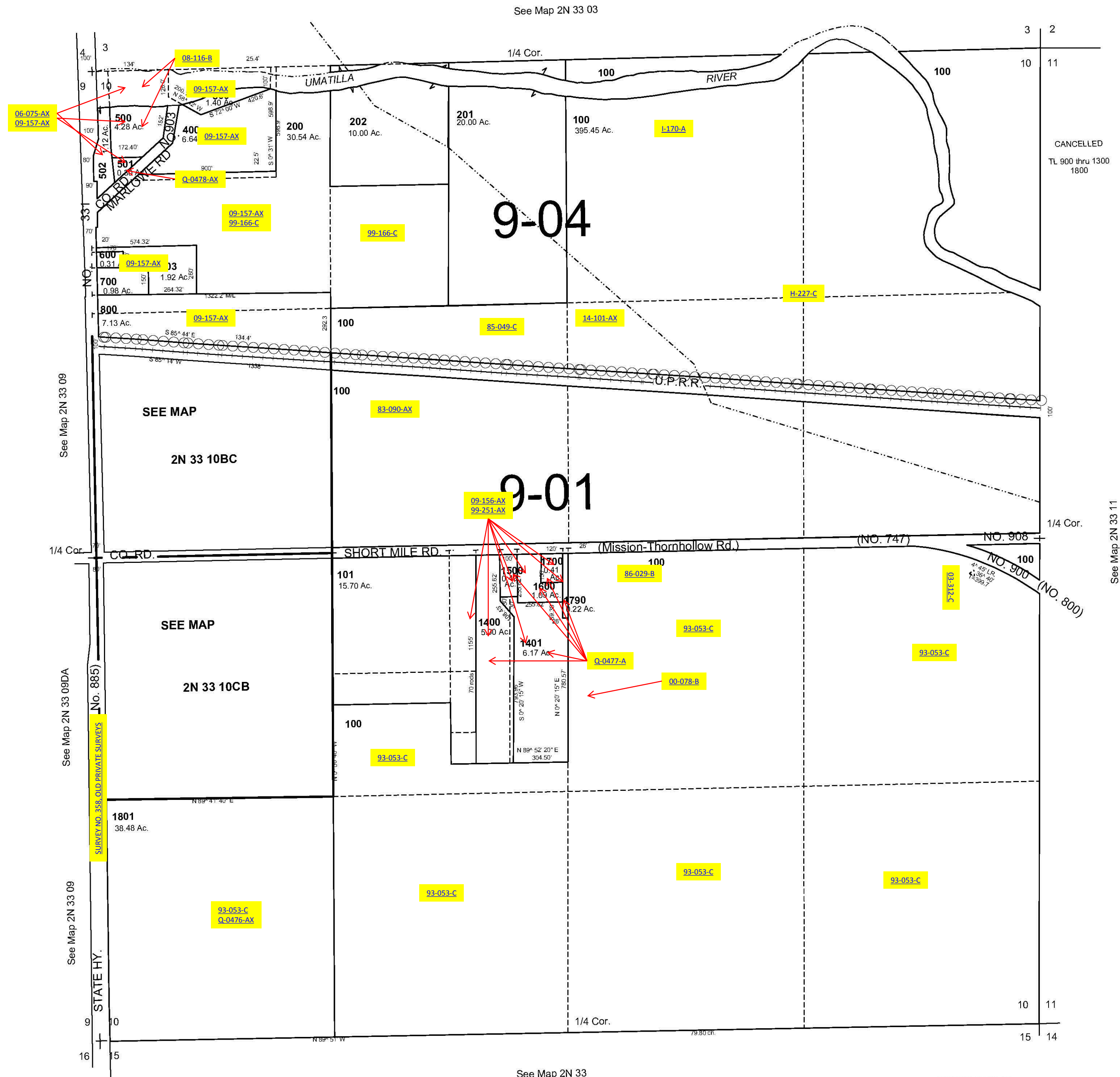
ALSO SEE SURVEYS 06-072-AX, 12-067-C, 12-068-C, 02-067-C, 82-060-B, 88-087-C, 89-098-B, CORNER RECORDS; G.L.O. SURVEYS; REDFIELD SURVEYS

This map was prepared for Assessment & Taxation purposes only and was NOT prepared nor is it suitable for legal, engineering or surveying purposes.

SEC 10 T2N R33E WM UMATILLA COUNTY

SCALE 1"=400'

2N 33 10
AERIAL PHOTO NO. 4P-98



Revised: 10-22-09
2N 33 10