

ALSO SEE SURVEYS 07-285-C, 13-180-B, Q-0468-AX, Q-0469-A, Q-0476-AX, 82-060-B, 89-098-B, H-144-C; CORNER RECORDS; G.L.O. SURVEYS; REDFIELD SURVEYS

This map was prepared for Assessment & Taxation purposes only and was NOT prepared nor is it suitable for legal, engineering or surveying purposes.

SEC 09 T2N R33E WM UMATILLA COUNTY

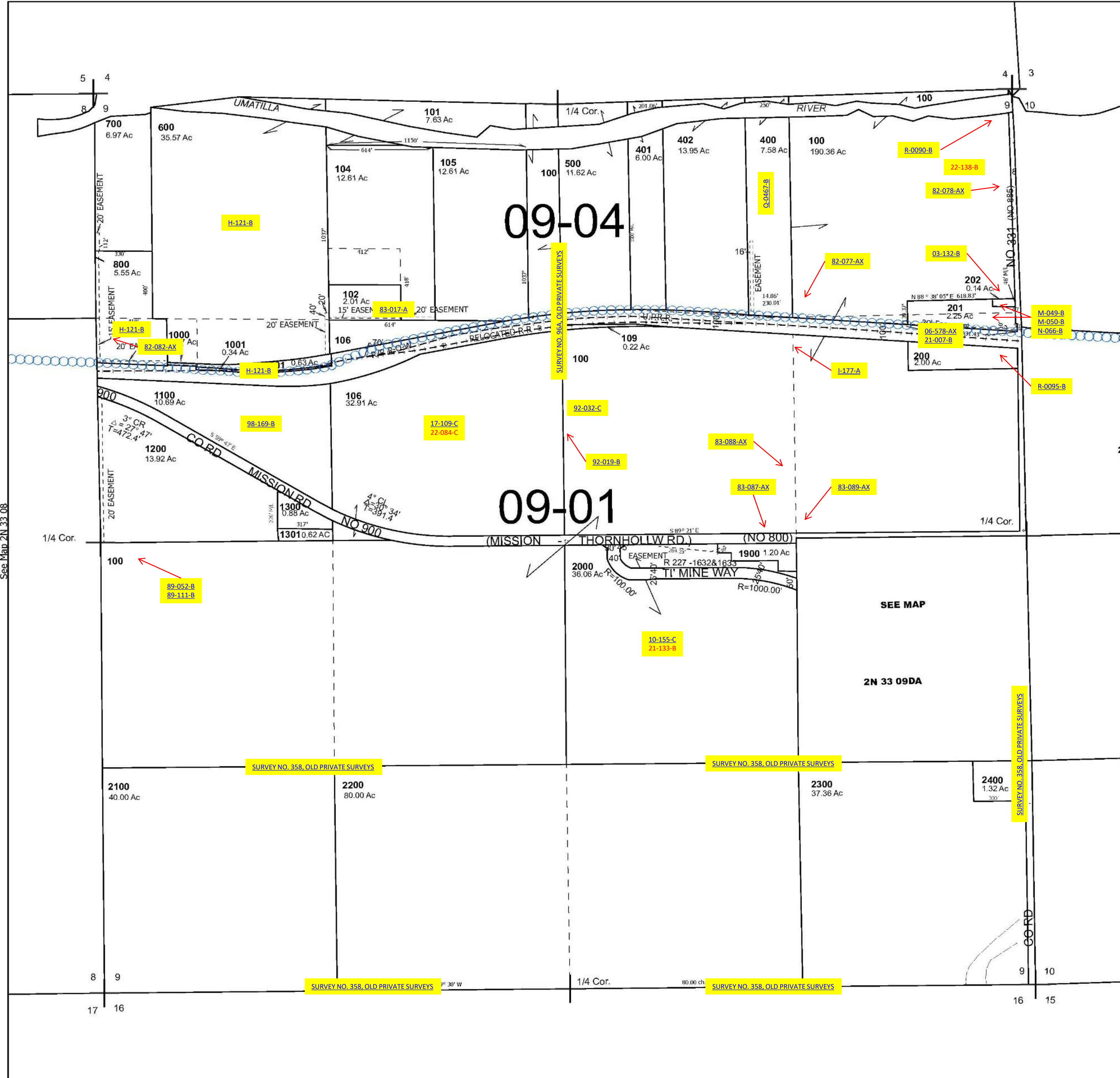
2N 33 09

SCALE 1" = 400'

See Map 2N 33

Cancelled Tax Lots

103	1700
107	1800
108	1801
300	1802
1400	1803
1401	1804
1402	
1500	
1600	
1601	



See Map 2N 33 08

See Map 2N 33 10

Revised 8/6/2024

See Map 2N 33

2N 33 09