

ALSO SEE SURVEYS 07-285-C, 13-180-B, H-144-C; CORNER RECORDS; G.L.O. SURVEYS; REDFIELD SURVEYS

This map was prepared for Assessment & Taxation purposes only and was NOT prepared nor is it suitable for legal, engineering or surveying purposes.

SEC 08 T2N R33E WM UMATILLA COUNTY

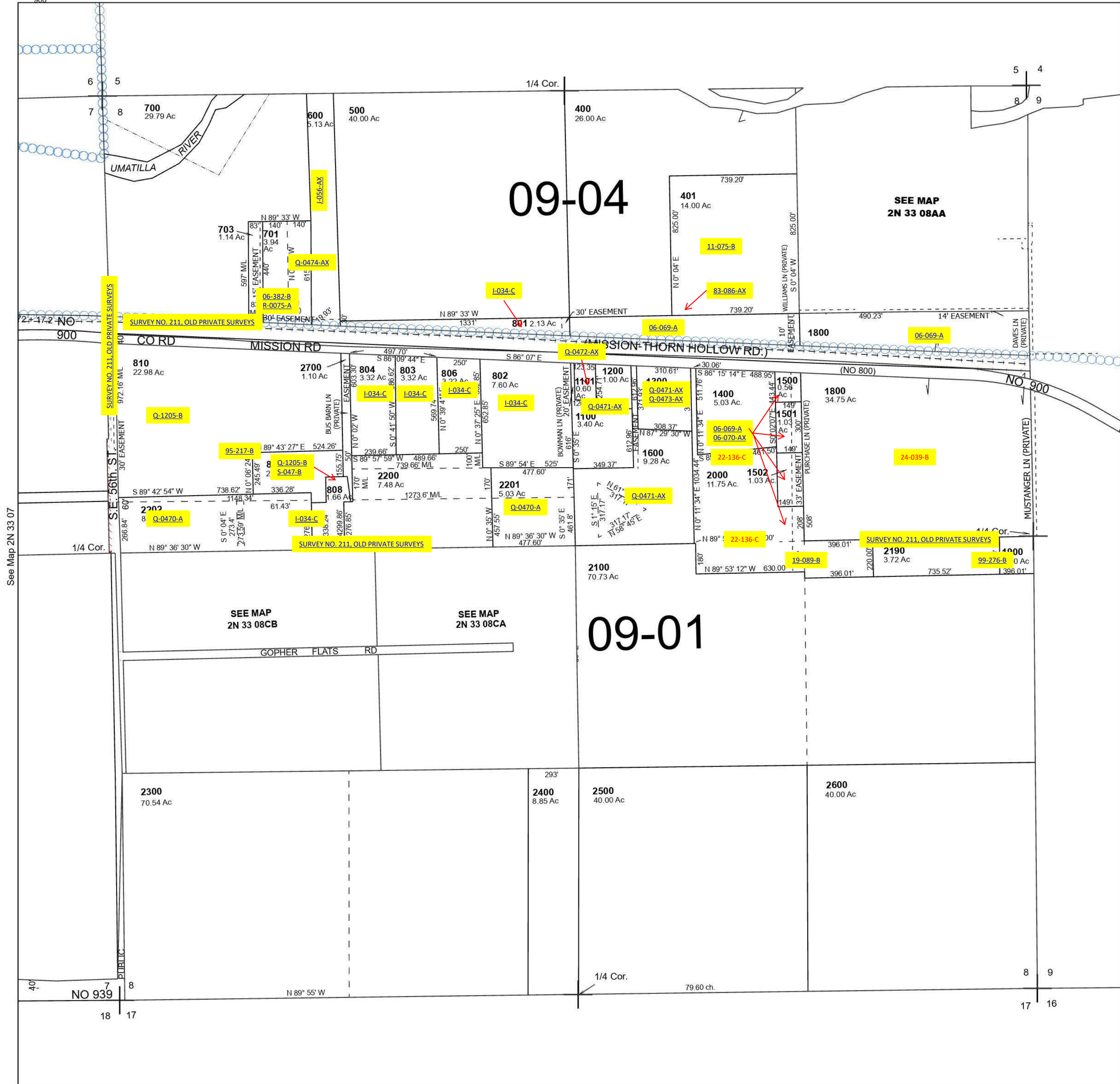
2N 33 08

SCALE 1" =400'

See Map 2N 33

Cancelled Tax Lots

102	809
103	807
200	1503
201	1700
100	2203-2231
202-204	2701
300	100
702	
805	
900	



See Map 2N 33 07

See Map 2N 33 09

Revised 7/14/2023

See Map 2N 33

2N 33 08