

ALSO SEE SURVEYS 06-384-A, 13-050-B, 12-027-B; CORNER RECORDS; G.L.O. SURVEYS; REDFIELD SURVEYS

This map was prepared for Assessment & Taxation purposes only and was NOT prepared nor is it suitable for legal, engineering or surveying purposes.

SEC 06 T2N R33E WM
UMATILLA COUNTY

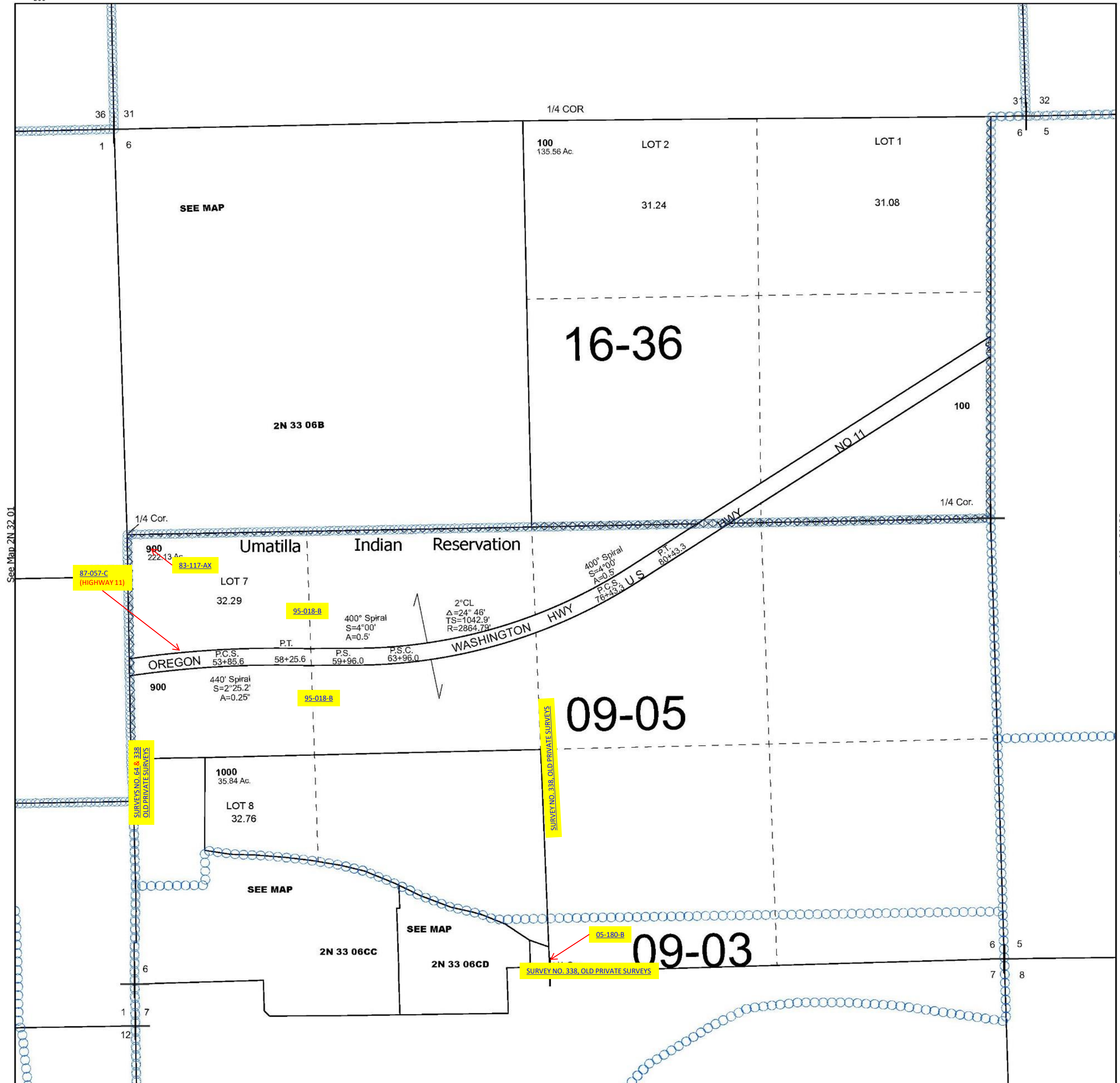
2N 33 06

SCALE 1" = 400'

See Map 3N 33 31

Cancelled Tax Lots

200	501
201	502
202	500
203	700
300	800
301	1100
400	
401	
402	
500	



Revised 8/6/2024

See Map 2N 33 07

2N 33 06