

This map was prepared for assessment purposes

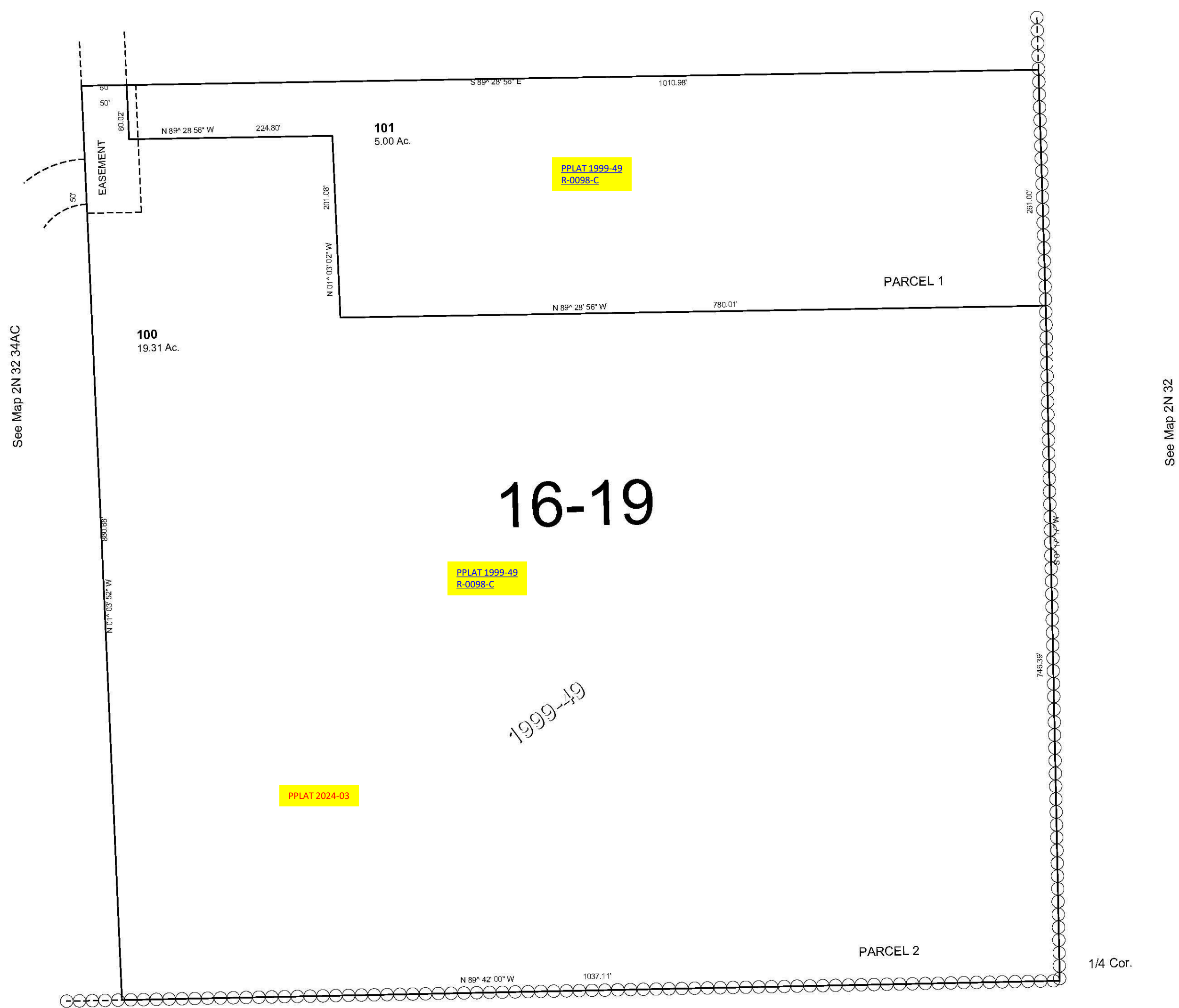
SE1/4 NE1/4 SEC 34 T2N R32E WM  
UMATILLA COUNTY  
SCALE 1"=100'

9/13/06

2N 32 34AD

AERIAL PHOTO NO. 4P-49 & 50

See Map 2N 32 34AA



See Map 2N 32 34AC

See Map 2N 32

See Map 2N 32 34

2N 32 34AD