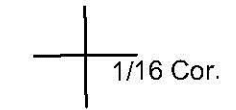
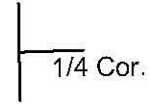


This map was prepared for assessment purposes

NW1/4 SW1/4 SEC 27 T2N R32E WM
UMATILLA COUNTY
SCALE 1"=100'

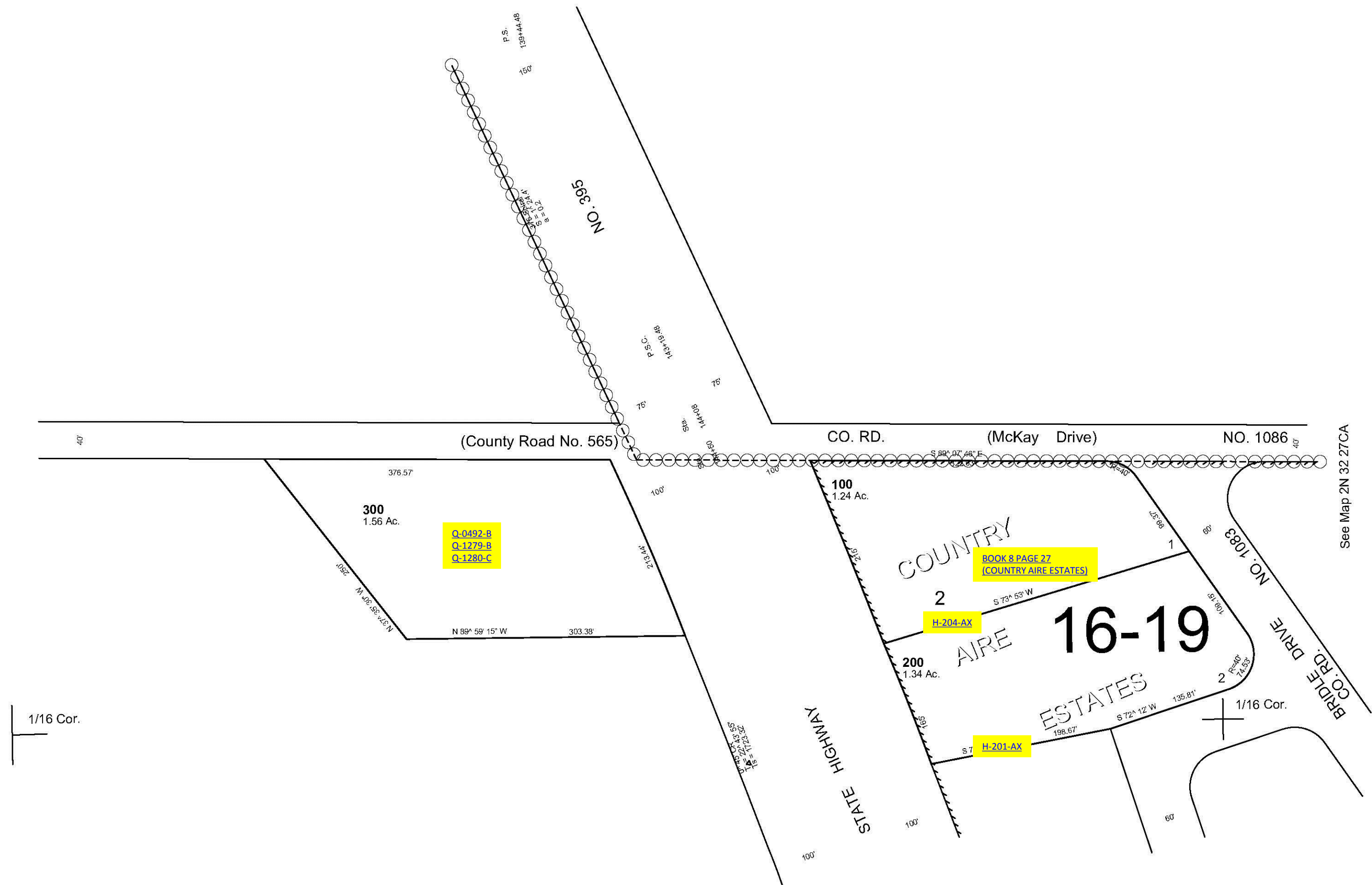
9/12/06

2N 32 27CB
AERIAL PHOTO NO. 4P-59



See Map 2N 32 27

See Map 2N 32 28



1/16 Cor.

1/16 Cor.

See Map 2N 32 27

2N 32 27CB