

ALSO SEE SURVEYS 93-054-C, 94-109-C, 96-055-G; CORNER RECORDS; G.L.O. SURVEYS

This map was prepared for Assessment & Taxation purposes only and was NOT prepared nor is it suitable for legal, engineering or surveying purposes.

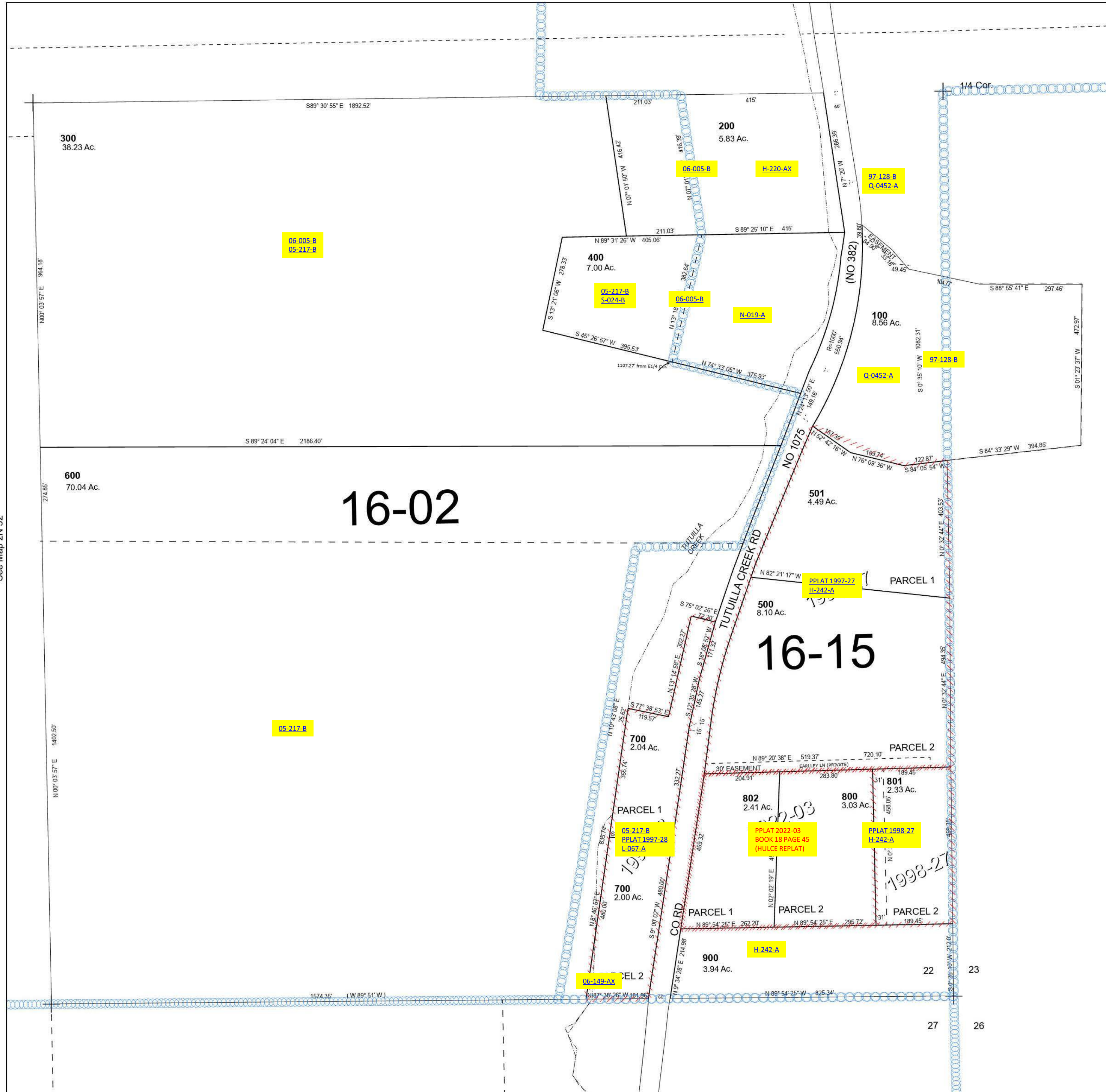
Cancelled Tax Lots:
301

SE 1/4 SEC 22 T2N R32E WM UMATILLA COUNTY

2N 32 22D

SCALE 1" = 200'

See Map 2N 32



See Map 2N 32

See Map 2N 32

Revised 4/18/2023

See Map 2N 32 27

2N 32 22D