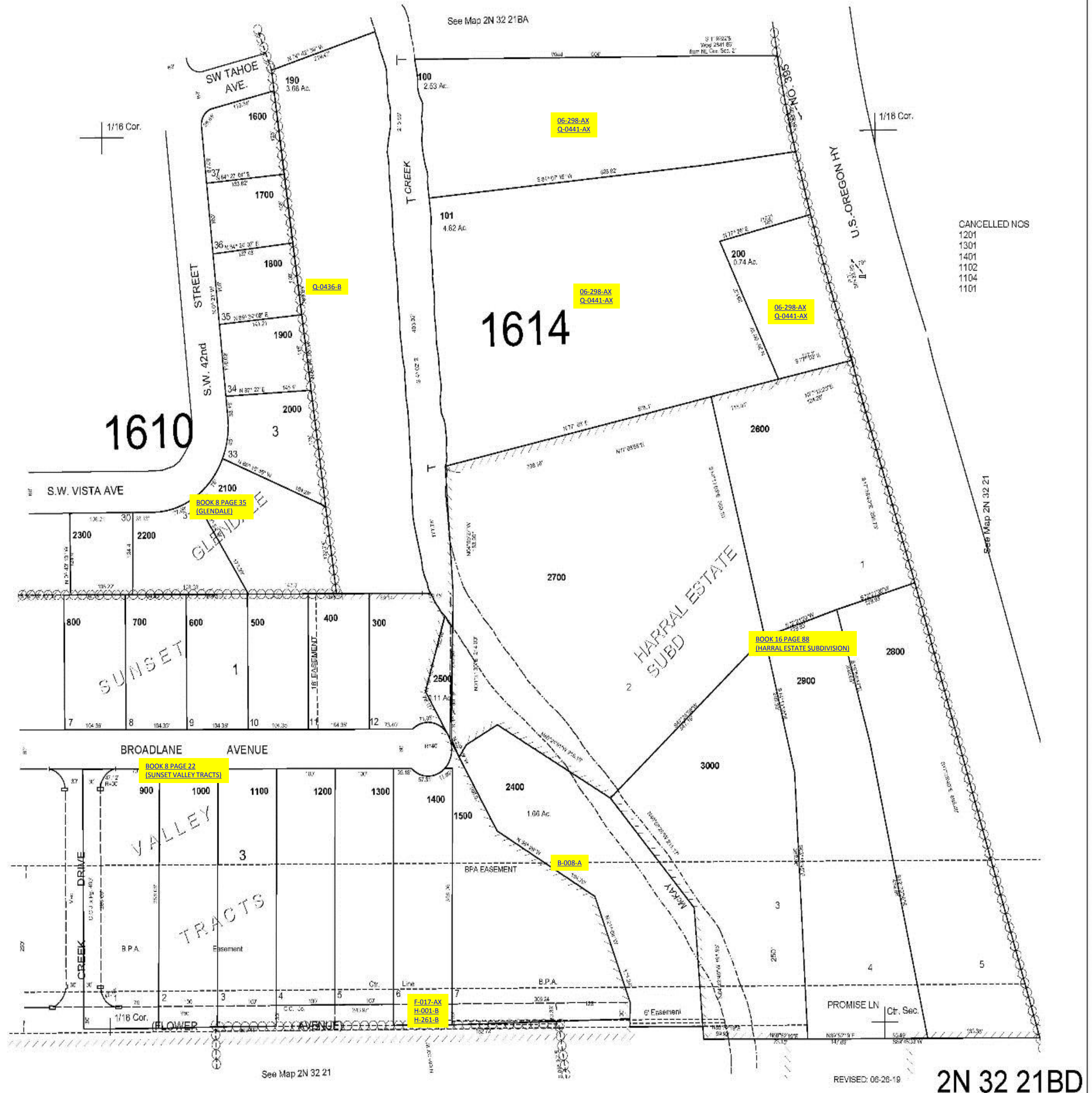


This map was prepared for assessment purposes

SE1/4 NW1/4 SEC 21 T2N R32E WM
UMATILLA COUNTY
SCALE 1"=100'

2N 32 21BD
AERIAL PHOTO NO. 4P-59



- CANCELLED NOS
- 1201
 - 1301
 - 1401
 - 1102
 - 1104
 - 1101

See Map 2N 32 21

REVISED: 08-26-19

2N 32 21BD