

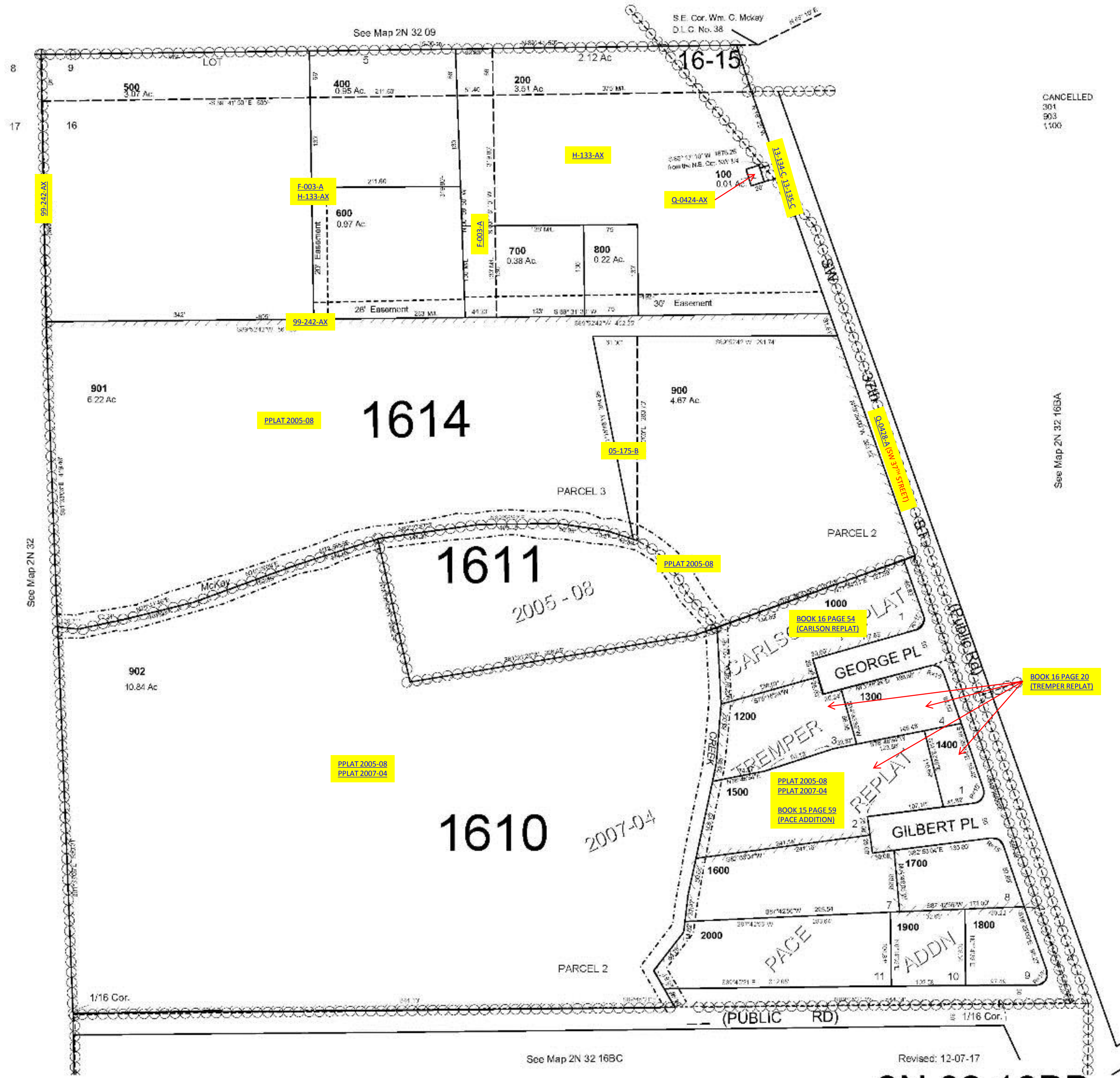
This map was prepared for Assessment & Taxation purposes only and was NOT prepared nor is it suitable for legal, engineering or surveying purposes.

NW1/4 NW1/4 SEC 16 T2N R32E WM UMATILLA COUNTY

1"=100'

2N 32 16BB

AERIAL PHOTO 4P-59



2N 32 16BB