

ALSO SEE SURVEYS 02-134-C, 05-093-C, 06-384-A, 13-050-B, 87-057-C, Q-0399-A, 90-050-C, 92-092-C, 96-055-G; CORNER RECORDS; G.L.O. SURVEYS

This map was prepared for Assessment & Taxation purposes only and was NOT prepared nor is it suitable for legal, engineering or surveying purposes.

SEC 12 T2N R32E WM UMATILLA COUNTY

2N 32 12

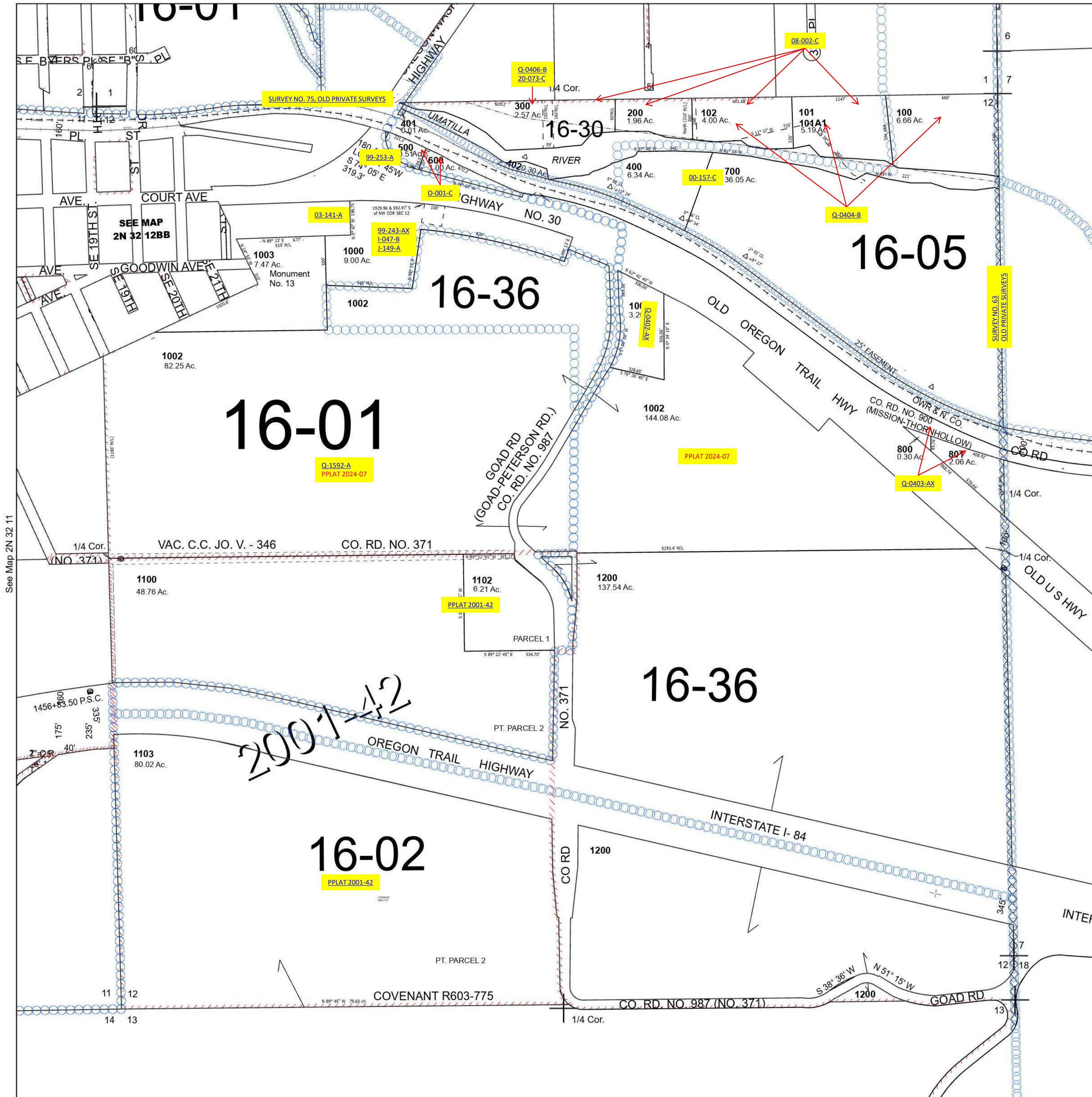
Pendleton

SCALE 1" = 400'

See Map 2N 32 01DC

Cancelled Tax Lots:

- 190
- 900
- 1500
- 1201
- 1202
- 1101



See Map 2N 32 11

See Map 2N 33

Revised 9/1/2023

See Map 2N 32

2N 32 12