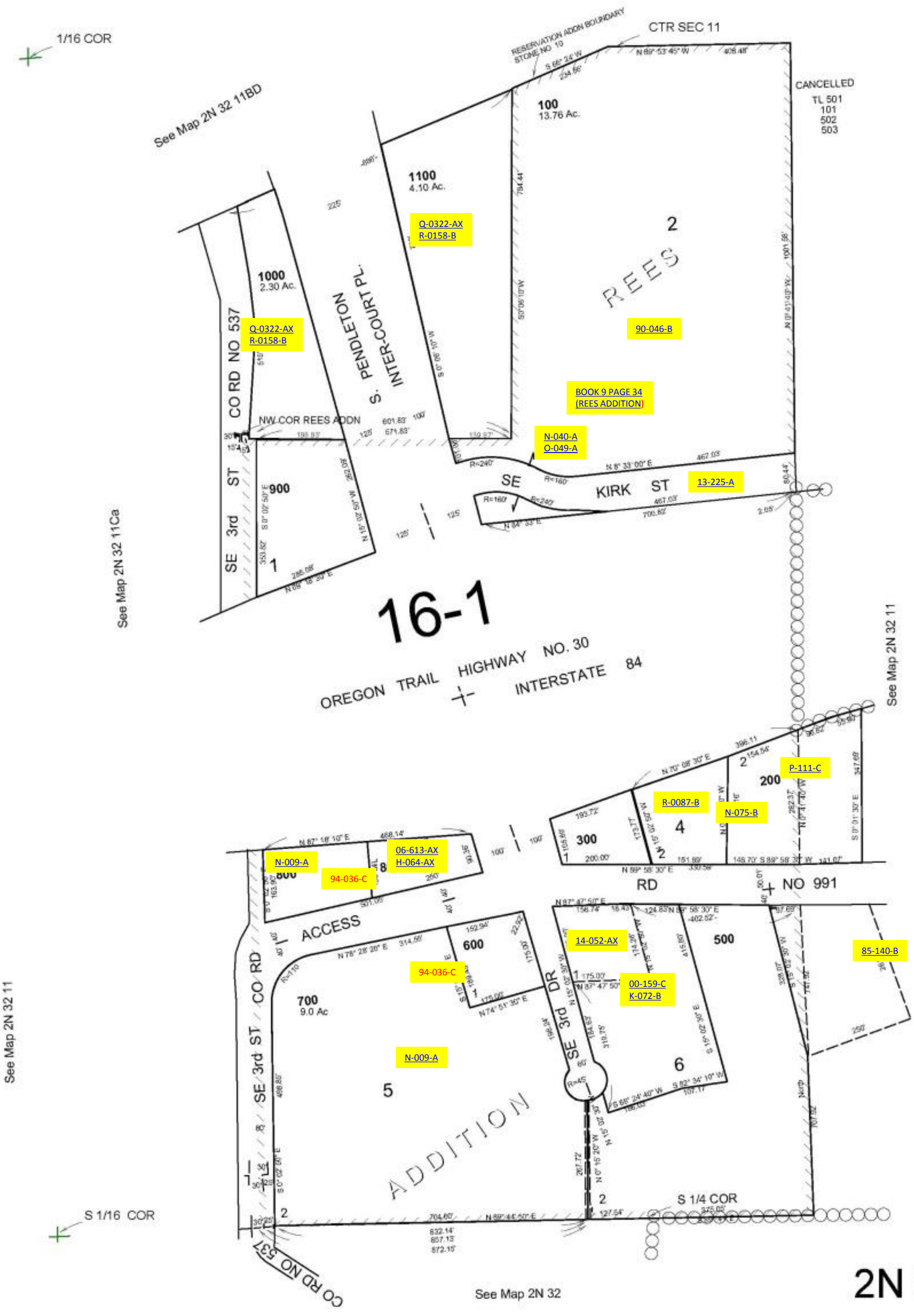


This map was prepared for Assessment & Taxation purposes only and was NOT prepared nor is it suitable for legal, engineering or surveying purposes.

SW1/4 SEC 11 T2N R32E WM
UMATILLA COUNTY
SCALE 1"=200'

2N 32 11C
AERIAL PHOTO NO. 4P=103



2N 32 11C